

What is Coming – The Rise of the Disruptors

COUNCIL OF
NEW JERSEY
GRANT MAKERS

CARLOS RODRIGUEZ – EXECUTIVE DIRECTOR, FULFILL

The Communities Response to Our Approach



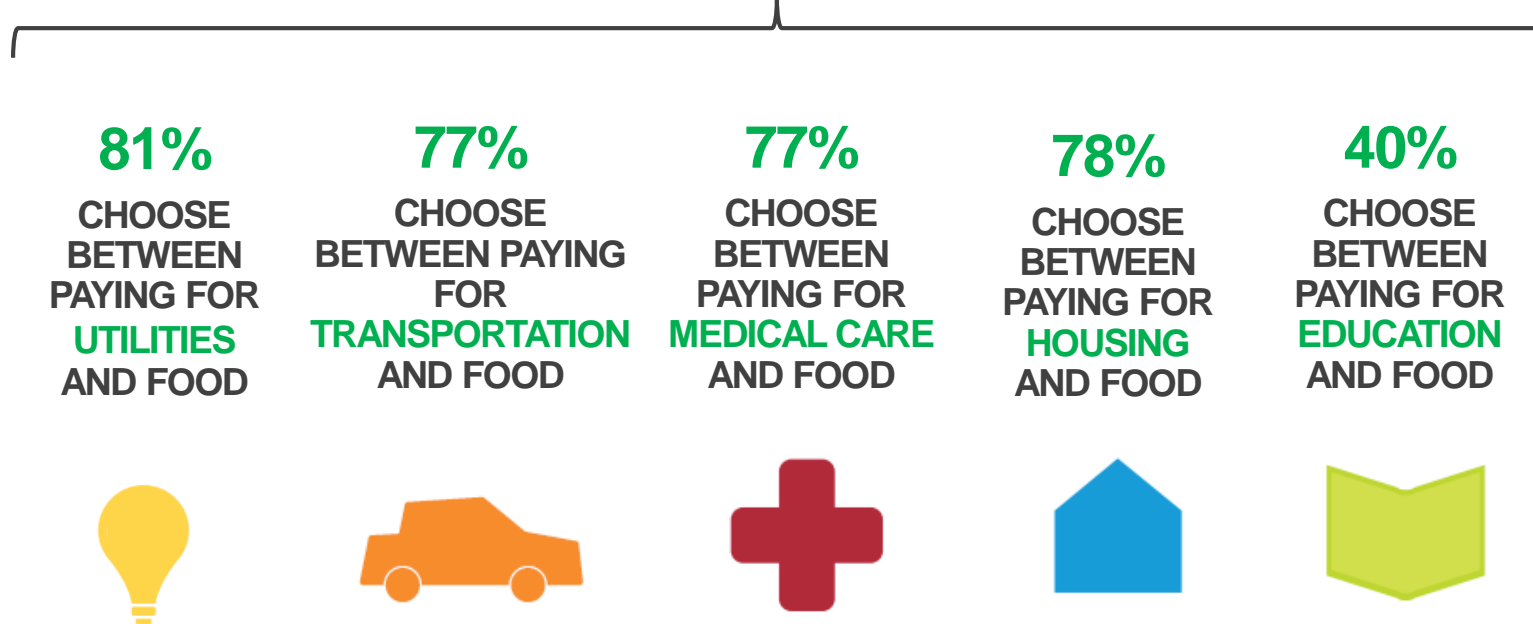


**HUNGER
WON'T
WIN HERE**

MEMBER OF
**FEEDING
AMERICA**

Why Food Insecure: Data Driven Exploration

Neighbors in need report frequently facing difficult choices in the past year when attempting to cover basic necessities:



Focus on Solutions to Scale and with Impact

The Ecosystem Around Food Insecurity

Working to
Feed the Lines and
Shorten the Lines by
strengthening the
Bottom Line of our
Neighbors in Need

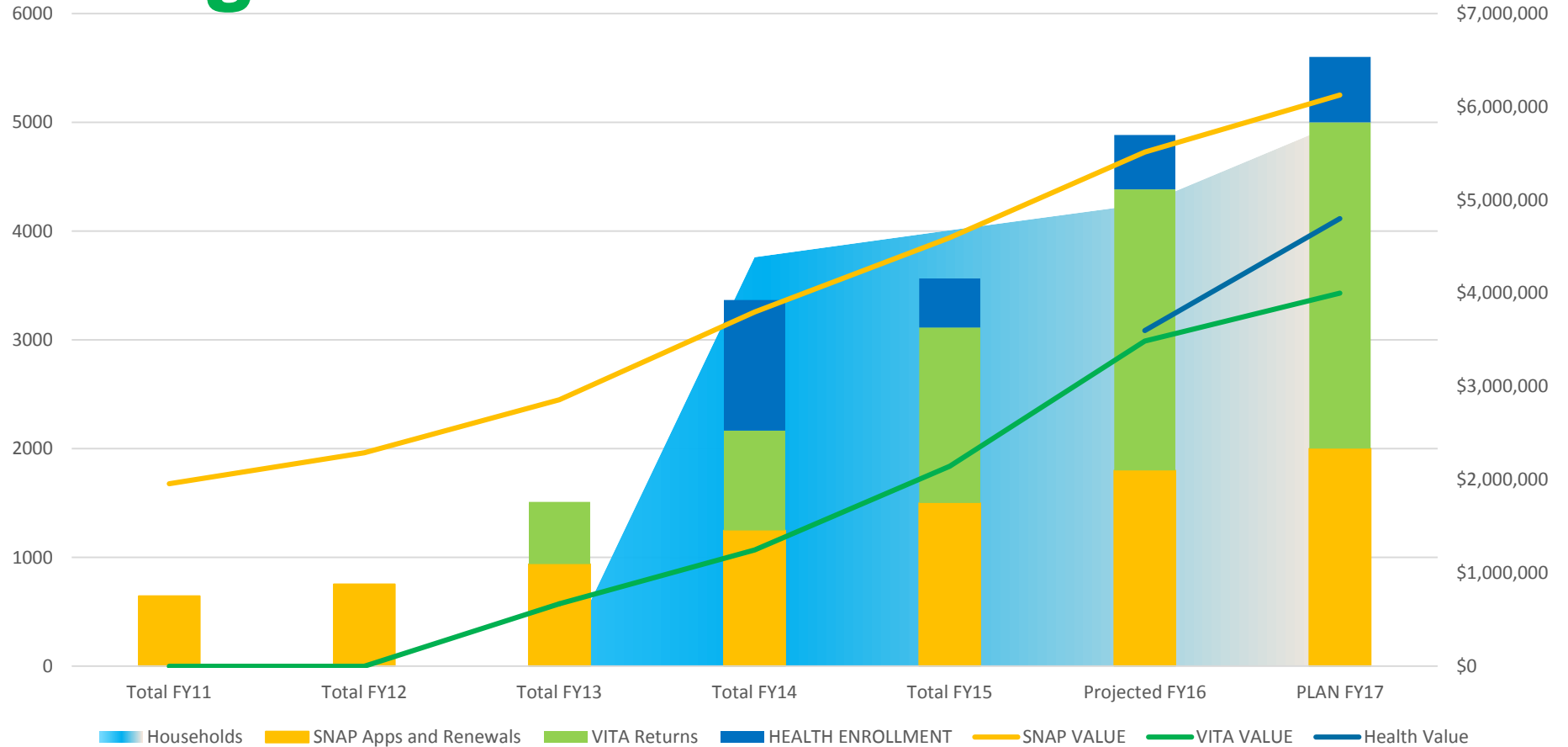


Aligning Metrics to Mission

	FY 2015	2016	2017	2018	2019	2020

In Millions

Strengthen the Bottom Line



Stories of Impact



PEOPLES PANTRY
MONDAY
9:30 AM - 12:00 PM
WEDNESDAY
11:00 AM - 4:00 PM

THE
FOODBANK
of Monmouth and Ocean

THE FOODBANK
MON - FRI 8AM - 4PM

Building Collaboration

The B.E.A.T. Center



Bringing Everyone All Together: 21st century hub community response to end the cycle of food insecurity.

The BEAT Center is a partnership of:

- Fulfill
- People's Pantry,
- Jon Bon Jovi Soul Kitchen
- With Multiple Community Agencies

Redefining - Partnerships

Financial Success Center - Freehold



United Way program which provides comprehensive resources under one roof to move residents from financial difficulty to economic well-being.



Building Solutions Within an Ecosystem

