

Pathways to Equity: Trust-Based Philanthropy



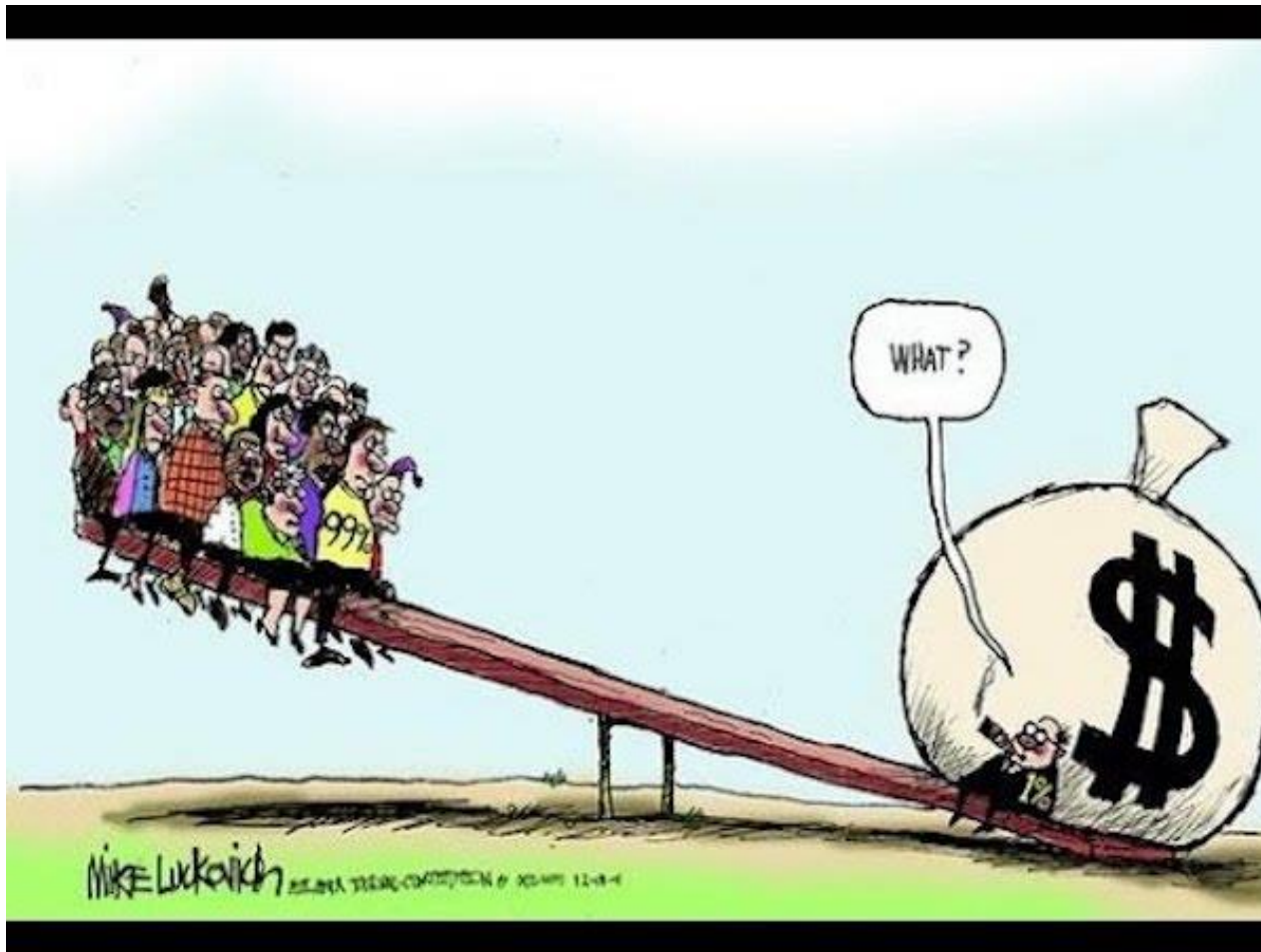
Hanh Le
Weissberg Foundation



Shaady Salehi
Trust-Based Philanthropy Project

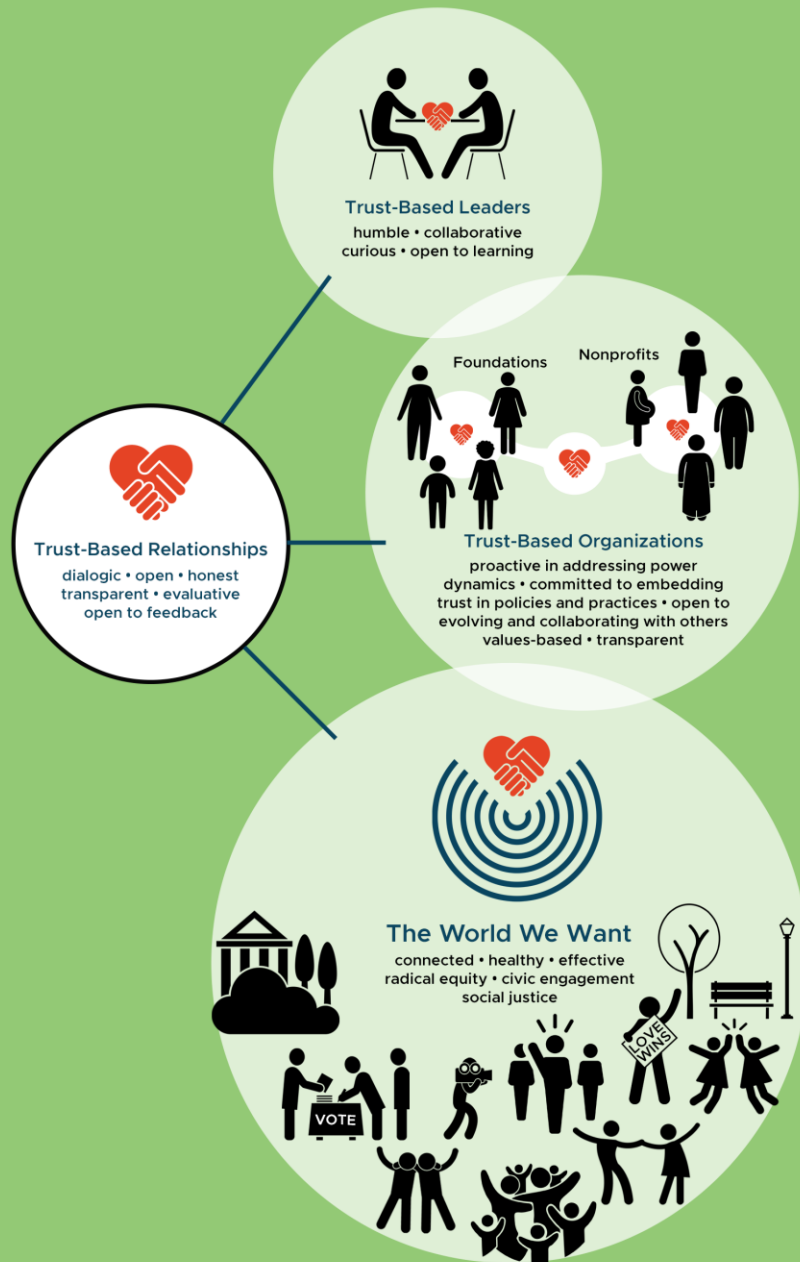


Trust-Based Philanthropy Begins with Confronting Systemic Power Imbalances



[This Photo](#) by Unknown Author is licensed under [CC BY-NC-ND](#)

Trust-Based Ecosystem



A Values-Based Approach

Power-Sharing

Equity

Humility

Transparency

Curiosity

Collaboration

trust-based
philanthropy
project

6 Principles of Trust-Based Philanthropy

- 1 Give Multi-Year Unrestricted Funding
- 2 Do the Homework
- 3 Simplify & Streamline Paperwork
- 4 Be Transparent & Responsive
- 5 Solicit & Act on Feedback
- 6 Offer Support Beyond the Check

www.trustbasedphilanthropy.org

