

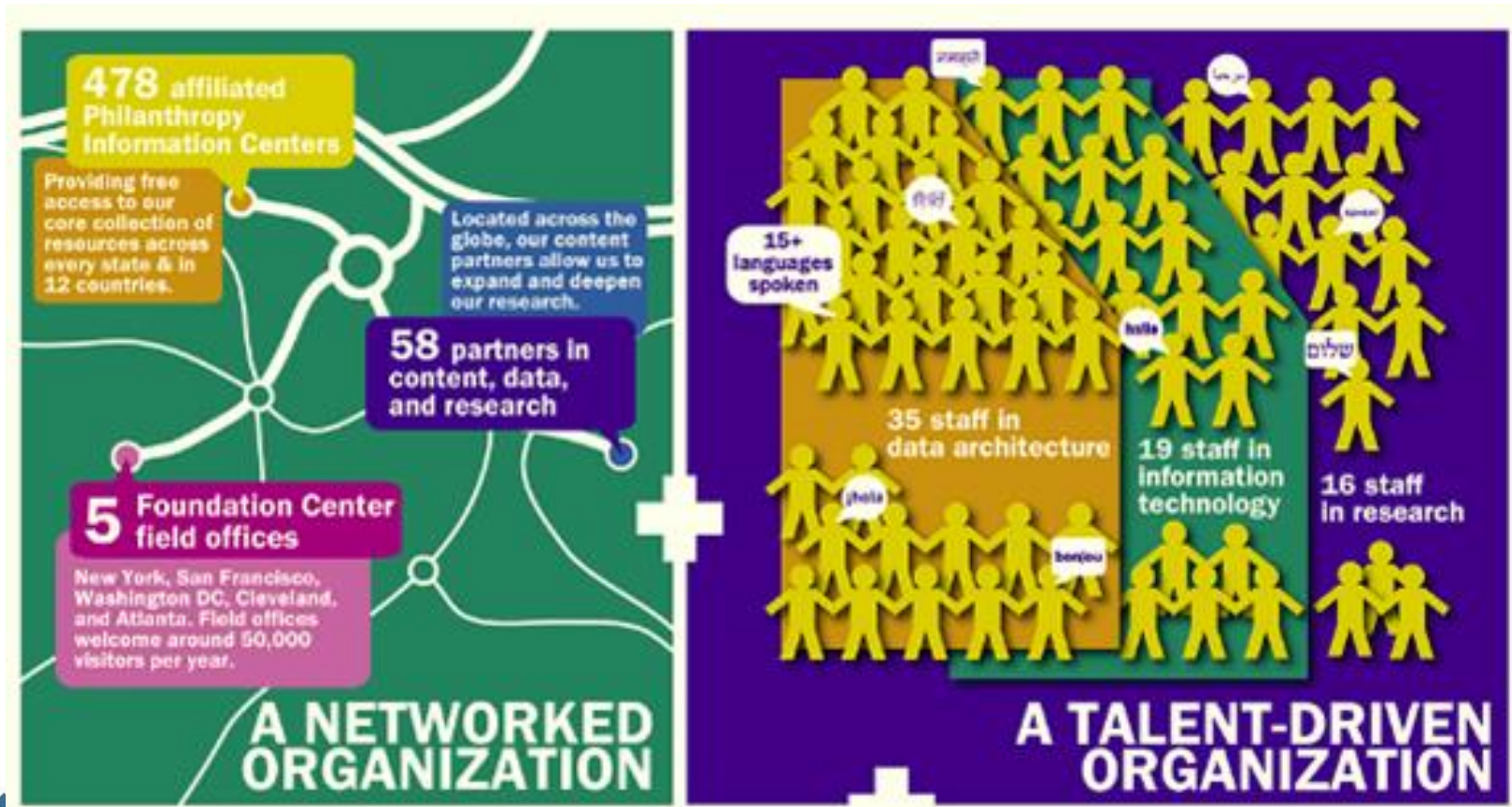
To strengthen the social sector by advancing knowledge about philanthropy in the U.S. and around the world.

Foundation Center 2020

- **Connect** nonprofits to the resources they need to thrive
- **Empower** donors with knowledge tools they need to be more strategic
- **Build** the global data platform for philanthropy
- **Communicate** philanthropy's contribution to making a better world
- **Encourage** greater foundation transparency
- **Ensure** that our technology provides a strong foundation for the Center's work

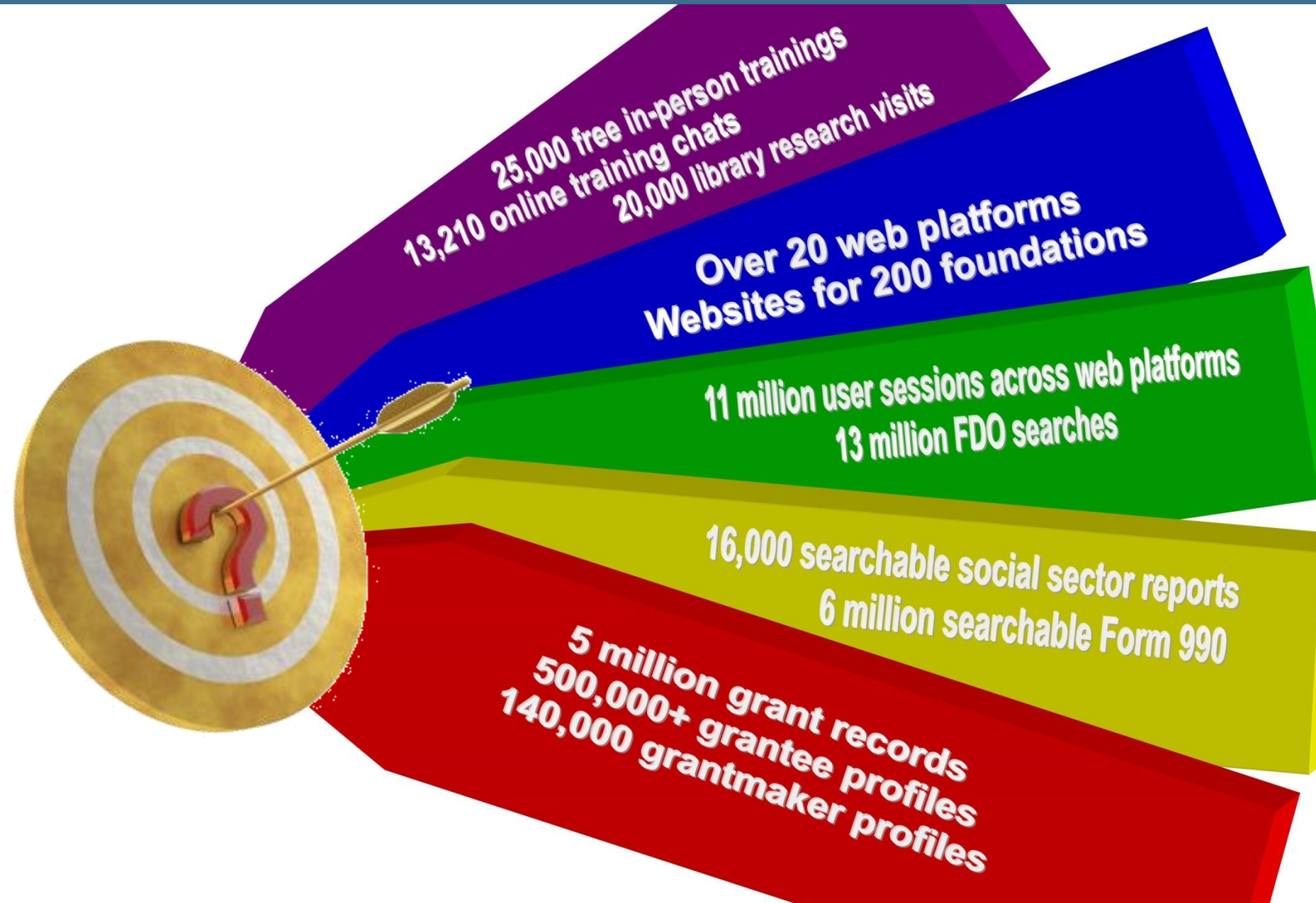
Information + Innovation = Knowledge

Data enhanced by our analysis, network, and best-in-class technology
Delivering knowledge to those who leverage it to change the world



FOUNDATION
CENTER

Information + Innovation = Knowledge



FOUNDATION CENTER DATA CIRCLE IS **GLOBAL**

**FC + 485 F.I.N.s
in 17 countries**

EUROPE

*European Foundation Center
U.K. Charity Commission
DAFNE*

WINGS
UNDP – SDGs
IATI
OECD DAC
OECD NetFWD

ASIA

*China Foundation Center
SDGfunders*

SOUTH AMERICA

*Fondos a la Vista
Asociación de Fundaciones
Empresariales
SDGfunders*

AFRICA

*SDGfunders
Philanthropy Nigeria
Morocco civil society support
Washfunders*

AUSTRALIA

Coming soon...

FOUNDATION CENTER SERVICES



PND PHILANTHROPY
NEWS DIGEST

issuelab

GRANTCRAFT

cf INSIGHTS

GLASSPOCKETS

FOUNDATION
DIRECTORY
O N L I N E

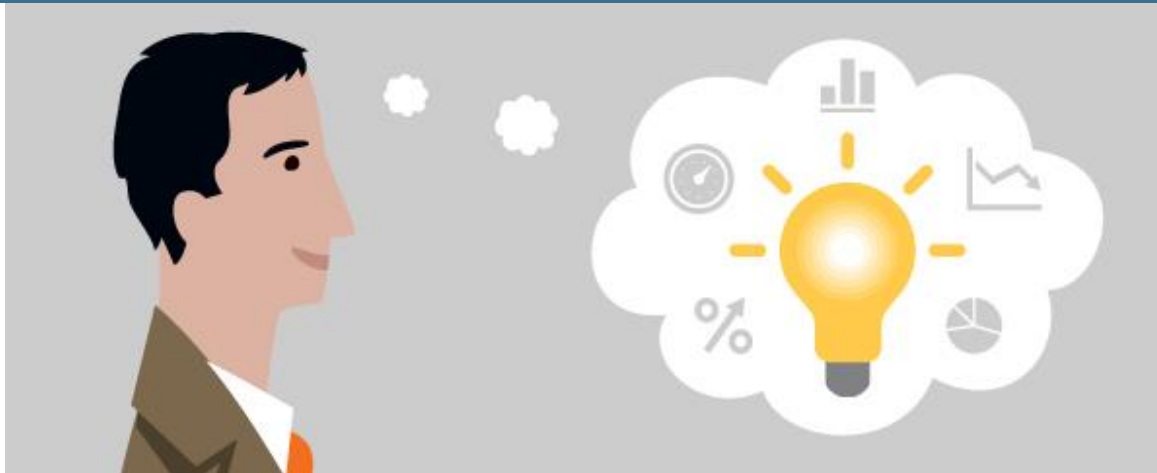
GRANT
SPACE

Foundation Stats





Technology **alone** won't drive insightful, data-driven decisions.

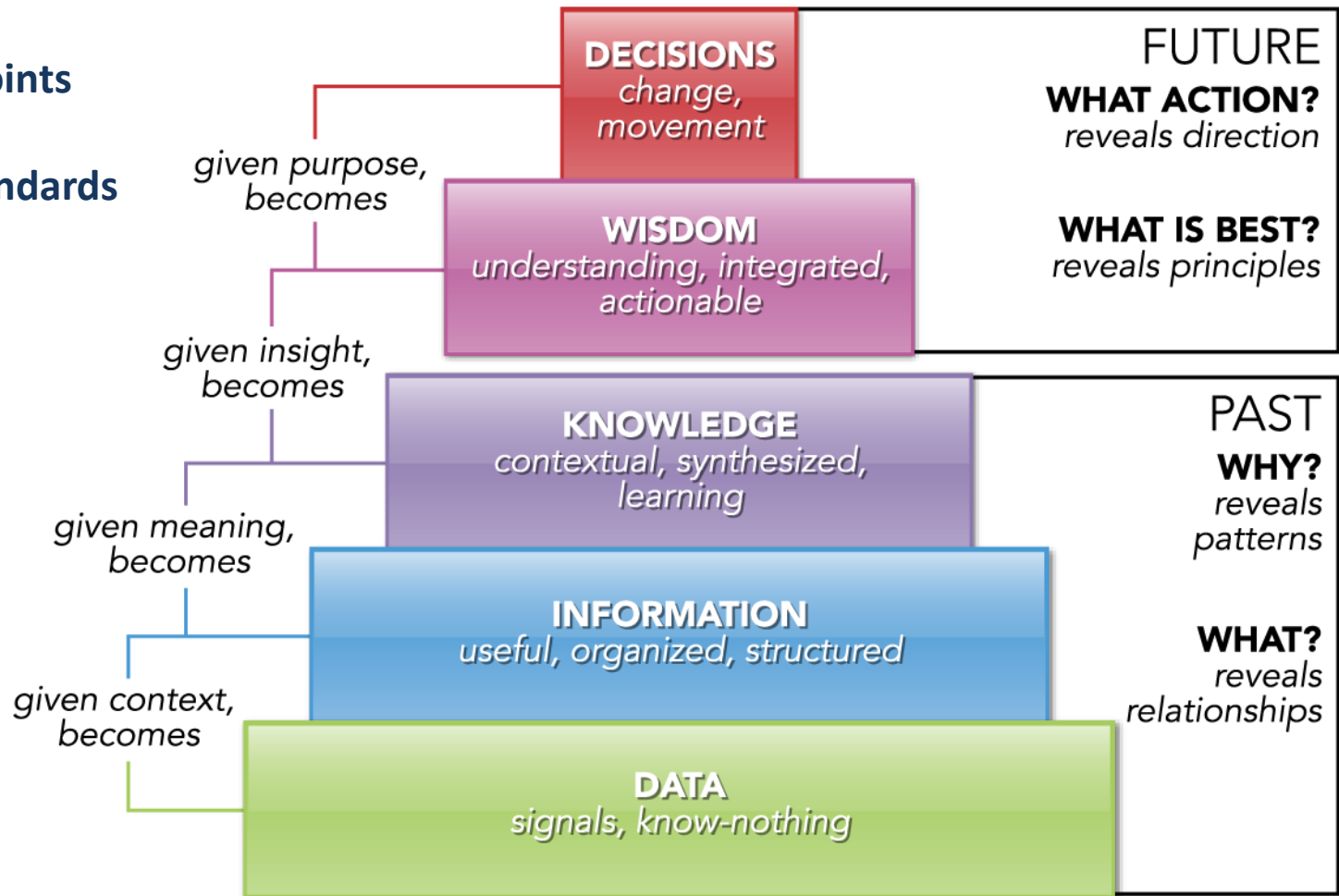


Philanthropy will be increasingly data- and knowledge-driven as donors strive for more impact on a larger scale, and finding the right information quickly will be paramount.

What questions do you want to answer?

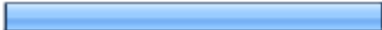








Well structured data and good data practices help inform the questions you want to answer

- Relevant data points
- Required fields
- Organization standards
- Retro-code



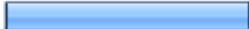
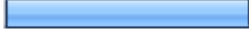

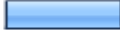
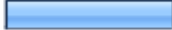

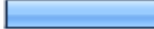
Excerpts from GrantCraft survey on Transparency

4. In your experience, what are the benefits of greater transparency and openness by foundations? (Please check all that apply.)

		Response Percent	Response Count
Strengthens credibility among peers		56.4%	407
Increases public trust		75.3%	544
Improves relationships with grantees and other stakeholders		81.0%	585
Improves learning within foundations		58.0%	419
Reduces duplication of effort in the field		52.1%	376
Facilitates greater collaboration		60.9%	440
Cultivates a community of shared learning and best practices		68.8%	497
Other		9.0%	65
I do not see a significant benefit		1.2%	9

Excerpts from GrantCraft survey on Transparency

5. What is the biggest transparency challenge your organization faces? (Please check all that apply.)

		Response Percent	Response Count
Insufficient staff		36.3%	247
Not enough clarity around practical steps for being transparent		36.4%	248
Resistance from board or senior leaders		23.6%	161
Additional costs		16.9%	115
Not enough clarity around perceived benefits		24.5%	167
Increased vulnerability		28.9%	197
Other (please specify)		22.2%	151
See open ended answers.			
answered question			681
skipped question			51



WHERE

WHAT

HOW

WHO

WHEN

WHY

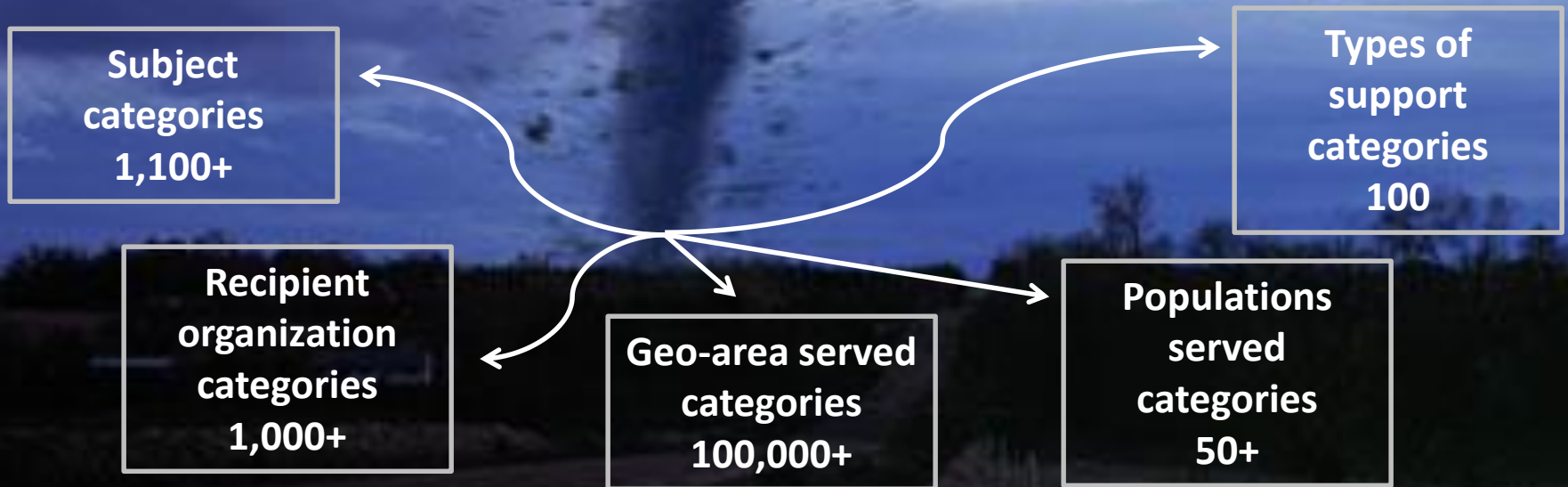
LET'S TALK – **PLEASE!**



*Recent Foundation Center survey concluded that U.S. foundations have more than **250 ways to describe “general operating support”***

TAXONOMY serves as the solution for lack of common framework across countries, within foundation networks, between individual foundations and nonprofit organizations and even within their own walls .

Structure of GCS Taxonomy



Philanthropy Classification System

THE NEW CODING FRONTIER



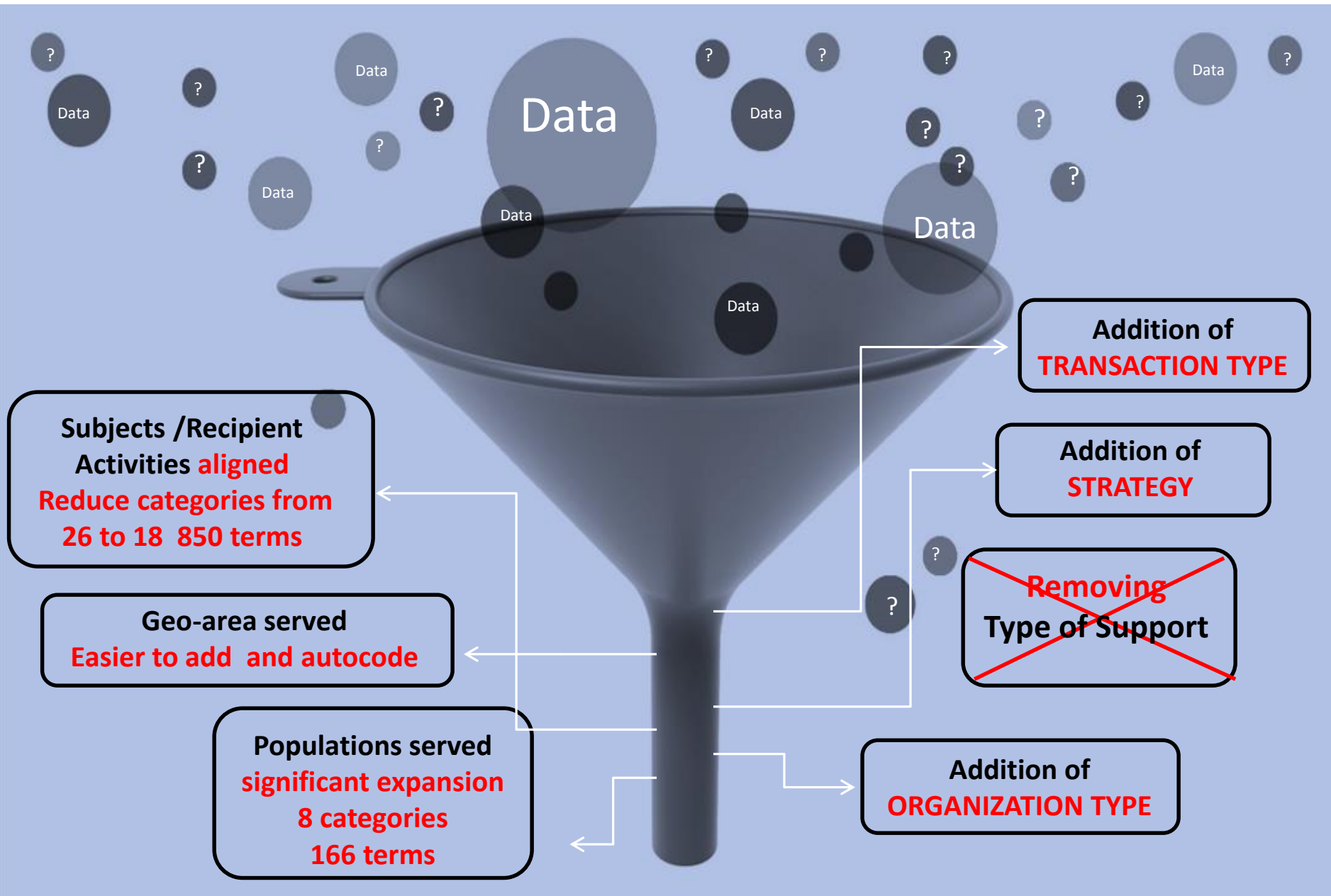
REVIEW PARTNERS



+ feedback from nearly 100 organizations



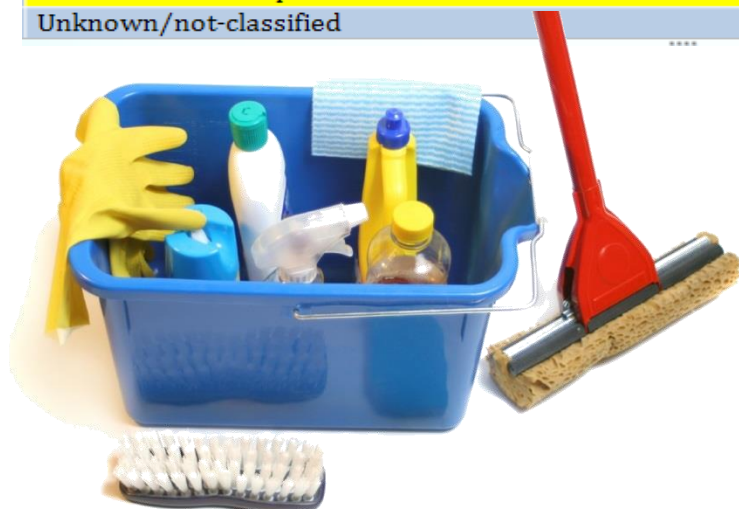
New Philanthropy Classification System



Current	Future
Arts, culture & humanities	Arts & culture
Education institutions & related activities	Education
Envir. quality, protection & beautification	Environment & natural resources
Animal-related activities	Animals
Health-General & rehabilitative	Health
Mental health, crisis intervention	→ Absorbed into Health category
Diseases, disorders, medical disciplines	→ Absorbed into Health category
Medical research	→ Absorbed into Health category
Public protection: crime/courts/legal services	Public safety
Public safety, disaster preparedness & relief	→ Absorbed into Public Safety
Human services – multipurpose & other	Human services
Employment/jobs	→ Absorbed into Human Services
Youth development	→ Absorbed into Human Services
Housing, shelter	→ Absorbed into Human Services
Food, agriculture & nutrition	Food Service Elements Moved Here
Food, agriculture & nutrition	Agriculture, forestry & fishing
Recreation, sports, leisure activities	Sports & recreation
International, foreign affairs and national security	International relations
Civil rights/social action, advocacy	Human rights & advocacy
Community improvement/capacity-building	Community & economic development
Philanthropy, voluntarism & grantmaking foundations	Philanthropy
Science/technology research institutes, services	Science & technology
Social sciences	Social sciences
Public affairs & society benefit	Government & civil society
Religion, spiritual development	Religion & spirituality
Mutual membership benefit societies	Moved to Auspice Codes and Other
Unknown/not-classified	Unknown/not-classified

Subject Level 1

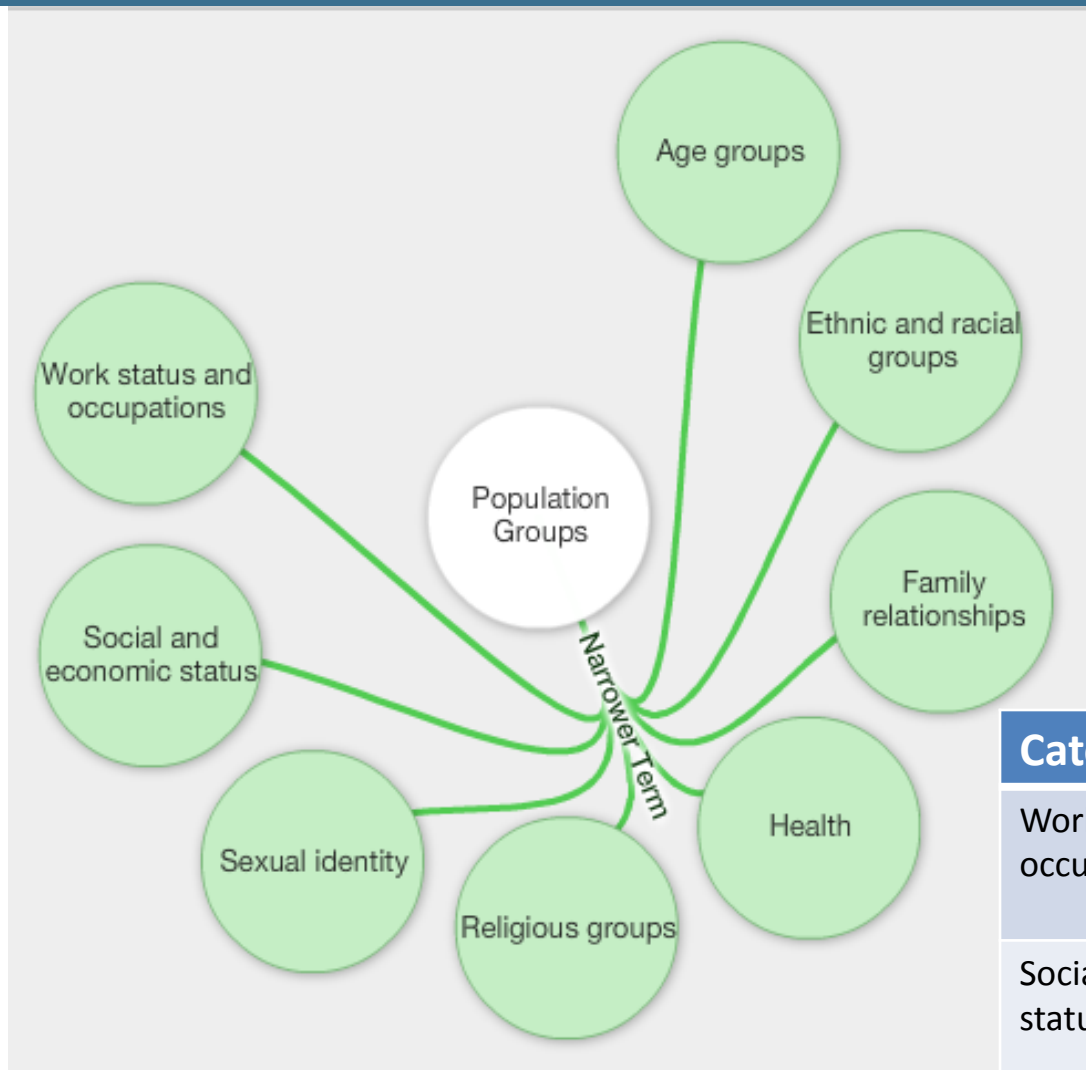
1	Agriculture, fishing and forestry
2	Arts and culture
3	Community and economic development
4	Education
5	Environment
6	Health
7	Human rights
8	Human services
9	Information and Communications
10	International relations
11	Philanthropy
12	Public affairs
13	Public safety
14	Religion
15	Science
16	Social sciences
17	Sports and recreation
18	Unknown or not classified



REORGANIZING THE TAXONOMY

Current Version			Updated Version		Change Made
Science/technology research institutes, services			Science & Technology		Renamed Science/technology research institutes, services
	Science		Science		
	Physical/earth sciences		Physical Sciences		Renamed Physical/earth sciences
	Marine science		Oceanography		Renamed Marine science
	Astronomy		Astronomy		
	Space/aviation		Space/aviation		
	Chemistry		Chemistry		
	Physics		Physics		
	Geology		Geology		
			Environmental Science		New
	Mathematics		Mathematics		
			Statistics		New
	Engineering & Technology		Technology		Split Technology and Engineering
	Computer science		Computer science		
			Robotics		New
			Biotechnology		New
			Nanotechnology		New
	Assistive technology		Assistive technology		
			Engineering		Split Technology and Engineering
			Civil engineering		New
			Mechanical engineering		New
			Chemical engineering		New
			Electrical engineering		New
	Biology/life sciences		Biology/life sciences		
	Anatomy (human)		Human physiology		Renamed Anatomy (human)
	Anatomy (animal)		Zoology		Renamed Anatomy (animal)
			Molecular biology		New
			Biochemistry		New
	Botany		Botany		

POPULATION SERVED UPDATES



Category	New Term Examples
Work status and occupations	Researchers Domestic workers Activists
Social and economic status	Cross-border families Working poor Detainees
Family relationships	Adolescent parents Foster and adoptive children Caregivers

EVOLUTION OF TYPE OF SUPPORT

Type of Support

Transaction
Type

Support
Strategy

Cash

P.R.I.

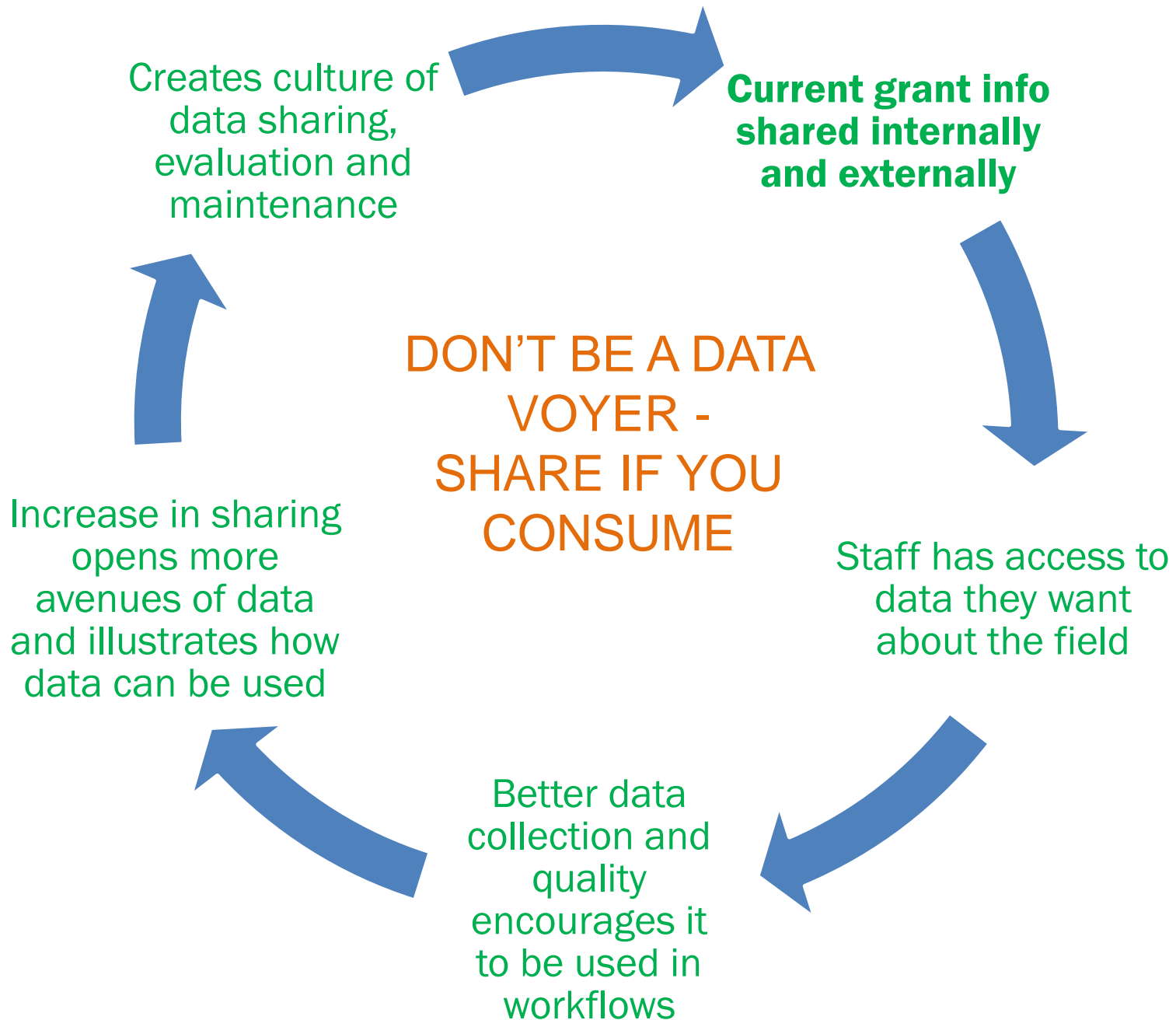
General
Support

Capacity
Building

Raw Data

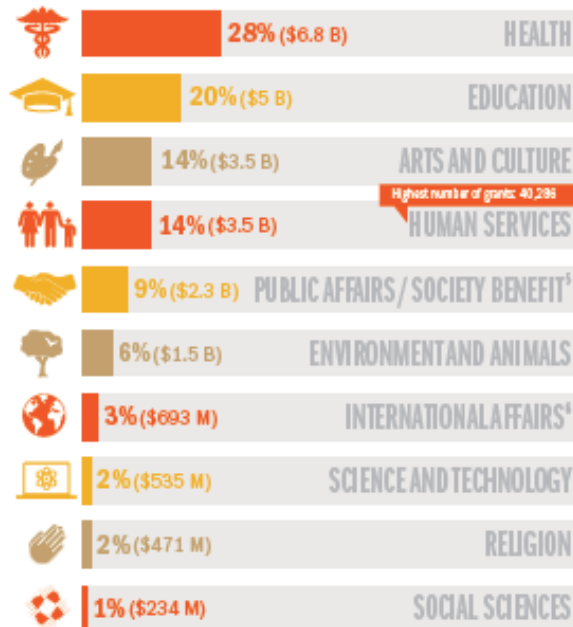
vs. Comprehensive Information

- Greater understanding of philanthropy worldwide and opportunities for donor **collaboration**
- Better opportunity for in-depth and comparative **analysis**
- Better ability to identify **funding gaps** and **emerging trends** to assess **need**
- Improved **platforms** and visualization **tools**
- Greater **transparency**



Ease of Use

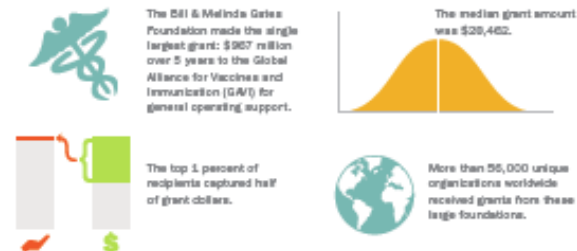
BY ISSUE FOCUS



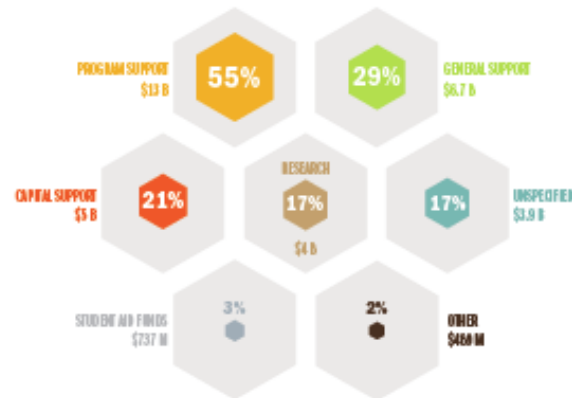
³ Includes civil rights, economic and community development, job training, and public affairs.

⁴ Includes international affairs, peace and security, and human rights. Does not include all international giving by U.S. foundations.

DID YOU KNOW?

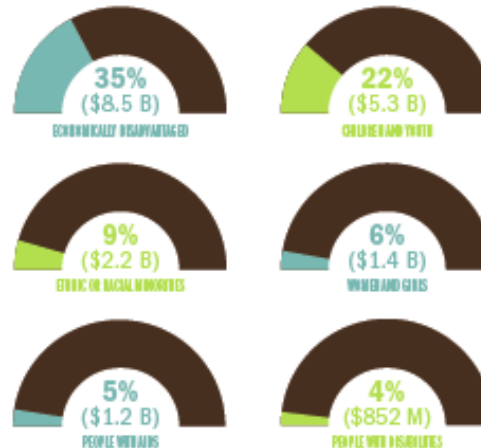


BY TYPE OF SUPPORT⁷



⁷ Grants may occasionally be for multiple types of support and would therefore be counted more than once. As a result, percentages tallied across categories total to more than 100 percent. Finally, due to one-fifth of grant dollars could not be coded for a specific type of support because donors have not provided this information.

BY POPULATION FOCUS⁸

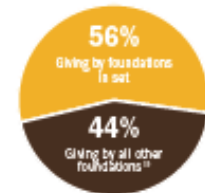


⁸ Figures based on grants awarded to organizations that could be clearly identified as serving specific populations or groups whose descriptions included a benefit for a particular population. Grants benefiting multiple population groups are counted in each applicable category. This chart includes groups that more than focus of at least 4 percent of grant dollars. Finally, 52 percent of grant dollars could not be coded for a specific population group.

WHAT'S INCLUDED

The Foundation Center reports on how foundations give by collecting and coding grants awarded by a set of the largest U.S. foundations. Following are details on what the 2011 set included:

- ✓ 1,122 of the top U.S. foundations by giving.
- ✓ Top 35 funders by giving in most states.
- ✓ All of their grants of \$10,000 or more.
- ✓ Domestic and international grants.
- ✓ Full authorized grant amounts in the year the grant was made (if available).
- ✓ Primarily 2011 data, although 2010 for some foundations.
- ✓ Grants from unrestricted and donor-advised funds⁹ at community foundations.
- ✓ ⁹ If provided by the foundations.
- ✓ **OVER HALF OF U.S. FOUNDATION GIVING EACH YEAR**



¹⁰ Excludes giving by operating and corporate foundations created by pharmaceutical corporations or other medical entities.

- ✗ Grants to individuals
- ✗ Grants from restricted funds at community foundations
- ✗ Grants from public charities, other than community foundations

Use Data For Strategy and Knowledge

