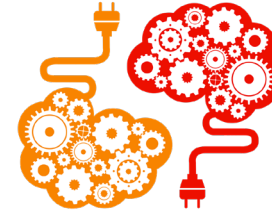
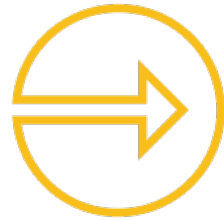




**SA2020**®

**RIPPLES OF CHANGE**



September 2010

October 2010

November 2010

December 2010

January 2011

March 2011

Launch Event  
Community Survey  
Vision Scan  
Online Feedback

Public Forum:  
Developing  
the Vision

Public Forum:  
Measuring  
Progress

Public Forum:  
Defining  
Success

Public Forum:  
Putting it  
Together

Community Vision  
&  
Report Unveiled

“ Our residents are among the **healthiest** in the nation with access to **quality education** and **economic opportunity**. San Antonio is the **safest big city** in the U.S. with **connected neighborhoods** and residents that are **engaged** civically. The city is **growing**, but is sustaining its natural resources as a **respectful steward**. San Antonio has public transportation that is recognized as a **model of efficiency**, a **vibrant downtown**, a diverse and **thriving creative community**, and a local government that’s **responsive and accountable**. Our entire community takes **responsibility for our collective well-being**. ”



Arts &  
Culture



Civic  
Engagement



Community  
Safety



Downtown  
Development



Economic  
Competitiveness



Education



Environmental  
Sustainability



Family  
Well-Being




Health &  
Fitness



Neighborhoods



Transportation



**WE DRIVE  
PROGRESS  
TOWARD A  
SHARED VISION  
OF A THRIVING  
SAN ANTONIO.**

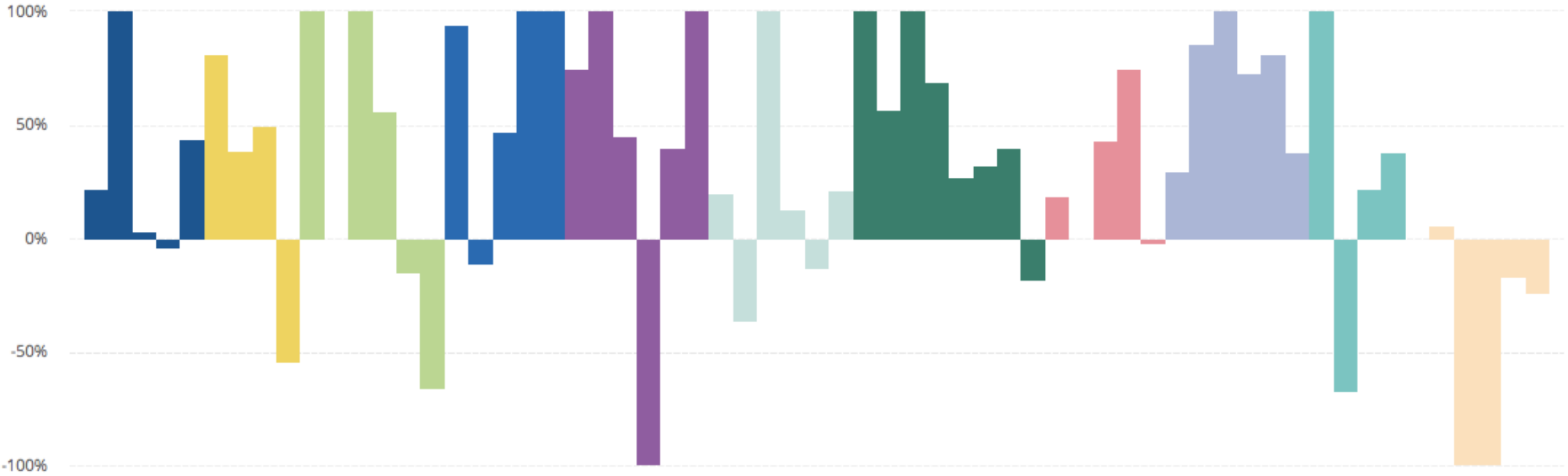
**SA  
2020**

**SA2020®**

How do **you** make  
the greatest **impact**?

# Progress Update

We track 61 indicators in eleven Cause Areas to measure progress toward the Community Vision.



ARTS & CULTURE



CIVIC  
ENGAGEMENT



COMMUNITY  
SAFETY



DOWNTOWN  
DEVELOPMENT



ECONOMIC  
COMPETITIVENESS



EDUCATION



ENVIRONMENTAL  
SUSTAINABILITY



FAMILY WELL-  
BEING



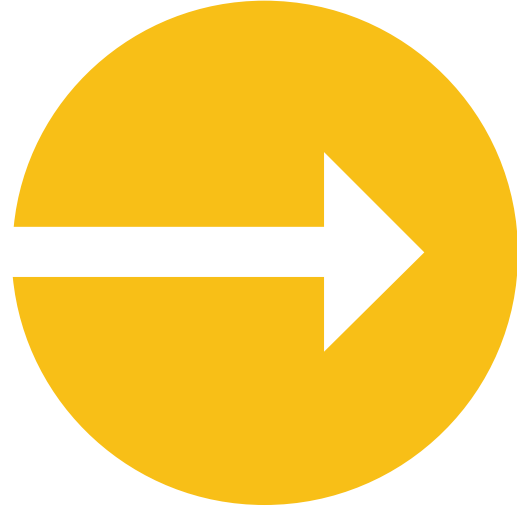
HEALTH & FITNESS



NEIGHBORHOODS

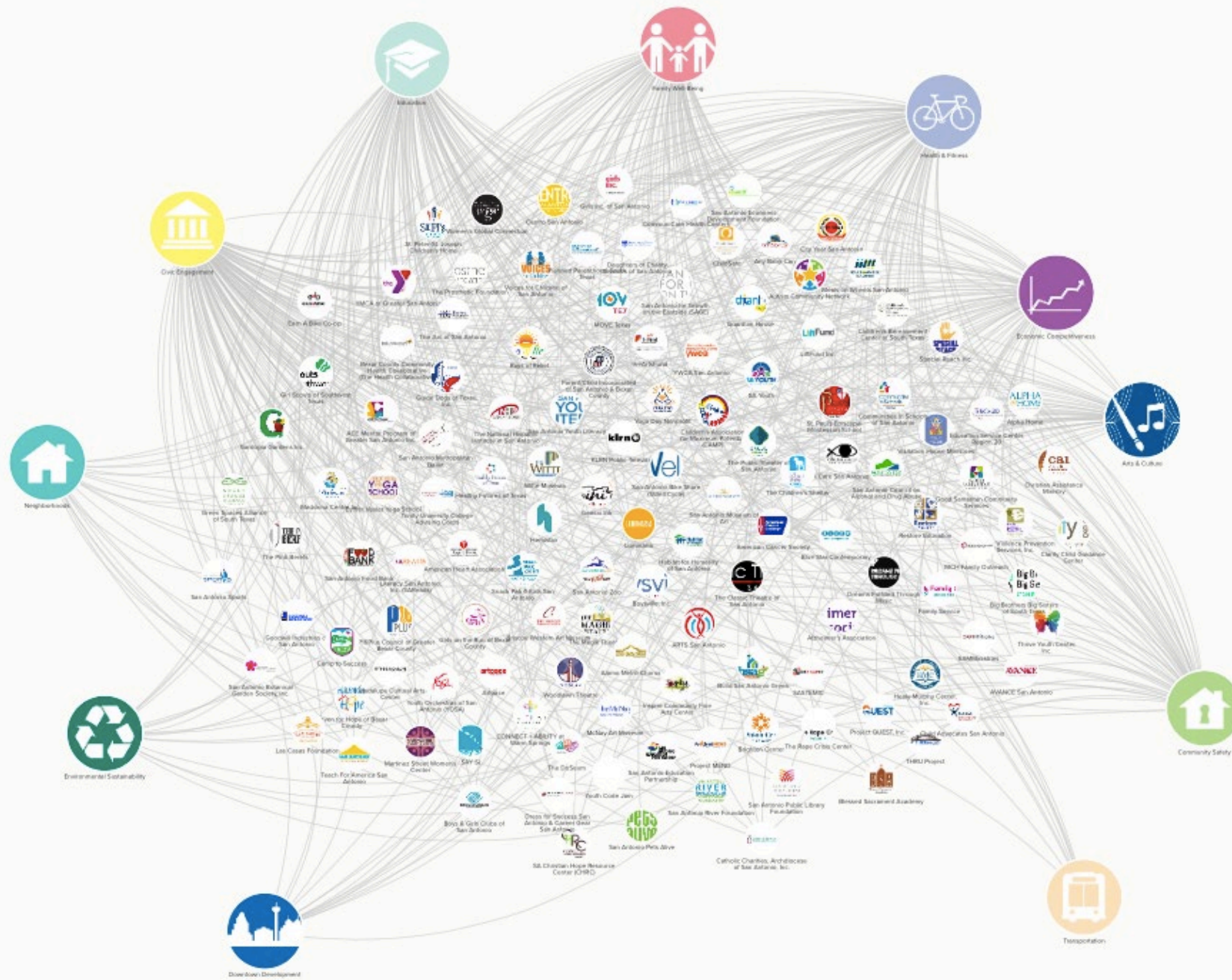


TRANSPORTATION



70%











# A SHARED VISION LEADS TO BIG, BOLD EFFORTS



Collaborations & programs inspired by our shared vision



**25+ WITH ASSOCIATES DEGREE OR HIGHER**  
US CENSUS, 2017

**35%**

**1st**

**BEST CITY FOR SOFTWARE ENGINEERS**  
SPAREFOOT, 2018

**FASTEST-GROWING CITY**  
US CENSUS, 2018

**1st**

**1 in 6**

**LIVE IN POVERTY**  
US CENSUS, 2017

**IN INCOME SEGREGATION**  
CITYLAB, 2014

**1st**



**2nd**

**MILLENNIAL GROWTH**  
SPAREFOOT, 2018

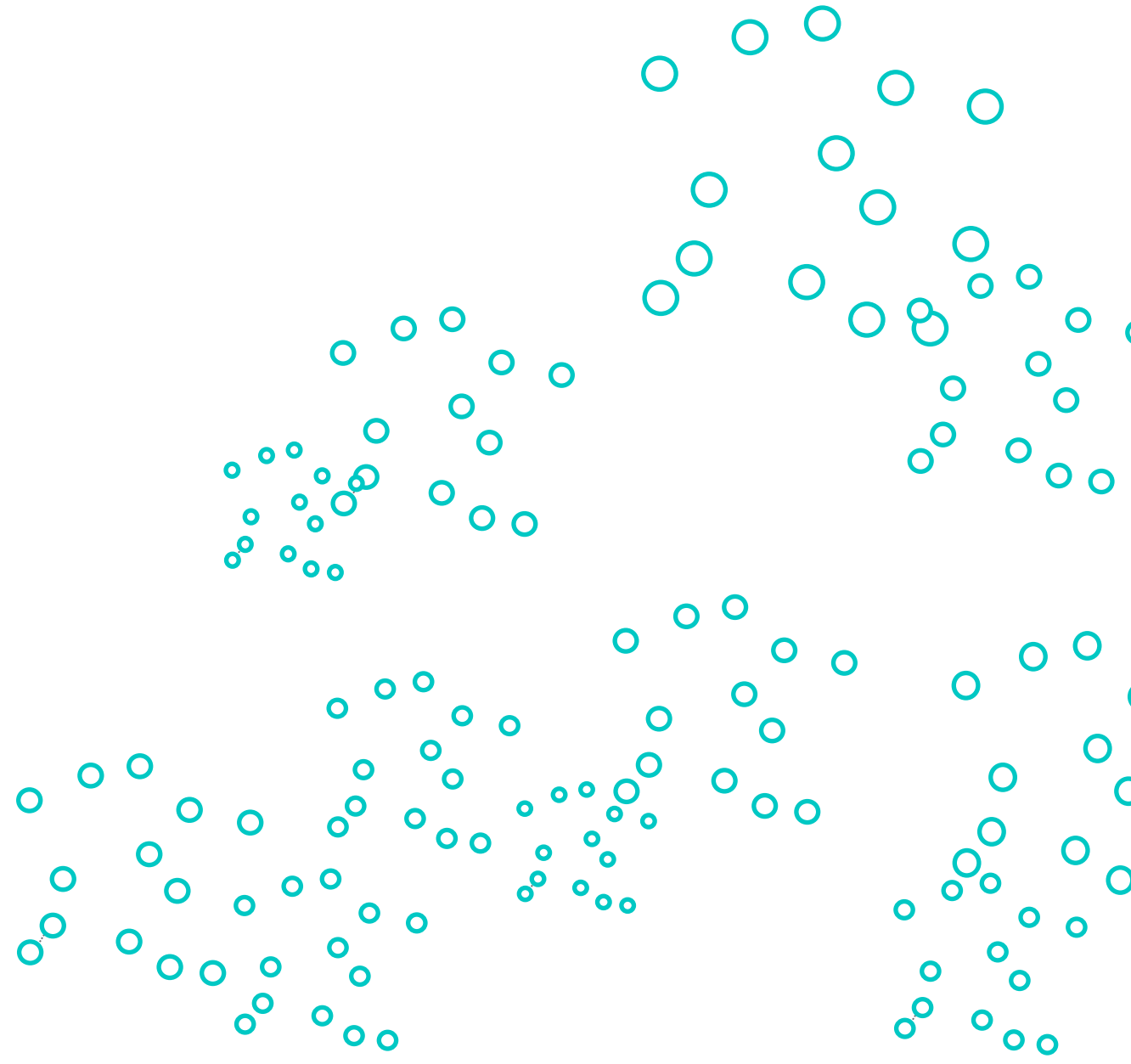


**BEST CITY FOR COLLEGE GRADS**  
SMART ASSET, 2018

**6th**

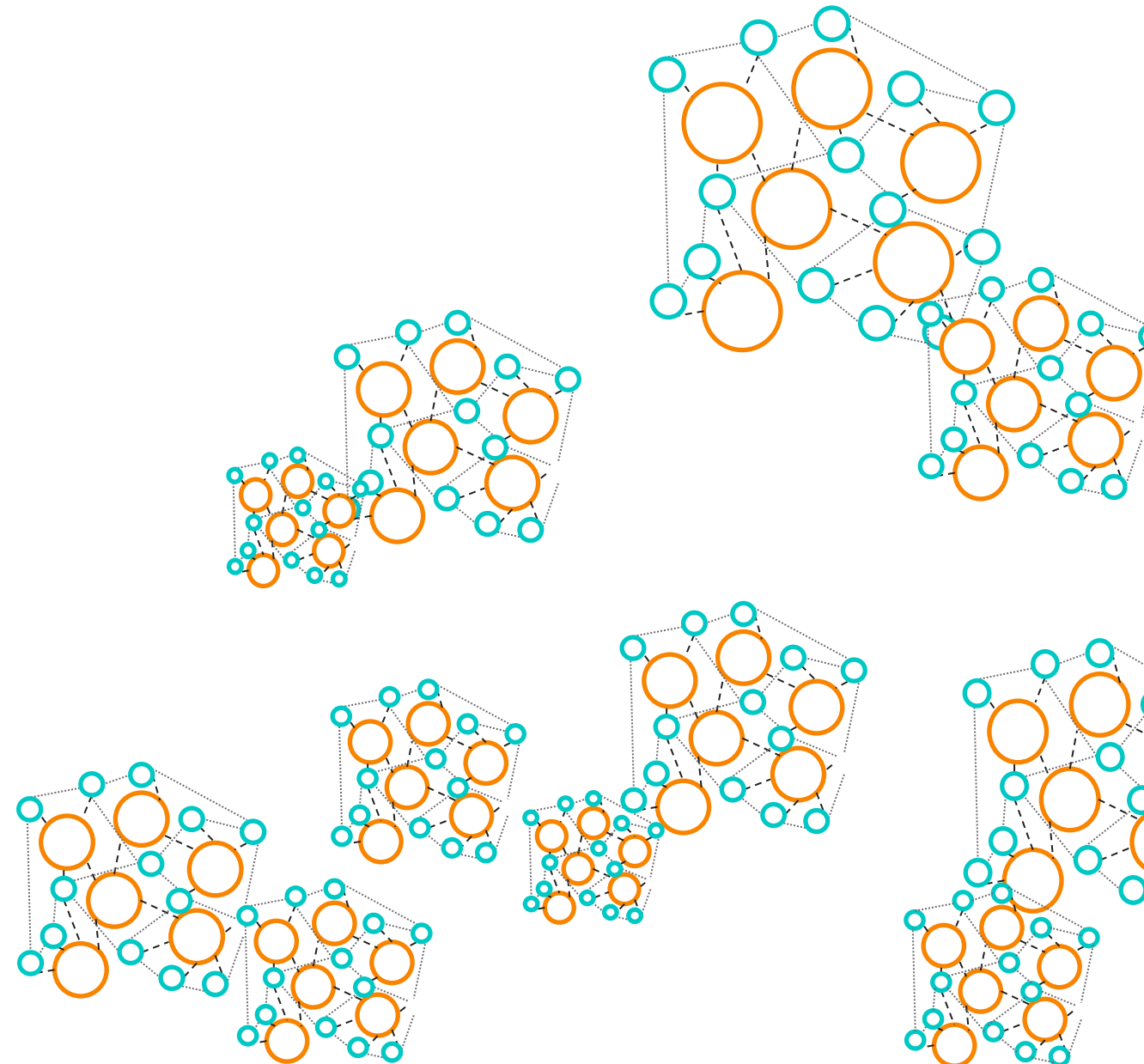
**1 in 3**

**BURDENED BY HOUSING COSTS**  
US CENSUS, 2017



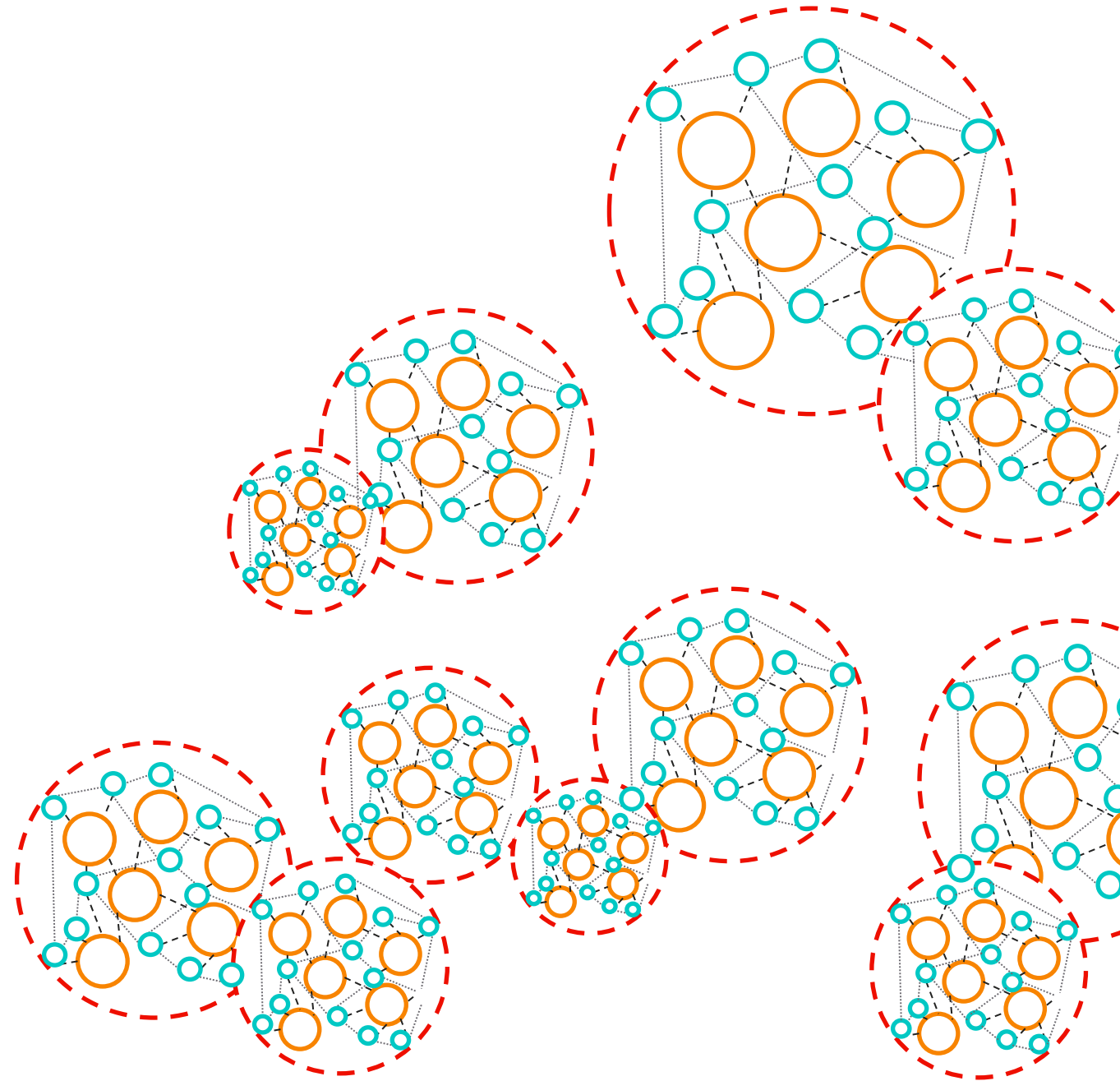
Adapted from the Academy for Systems Change





Adapted from the Academy for Systems Change





Adapted from the Academy for Systems Change

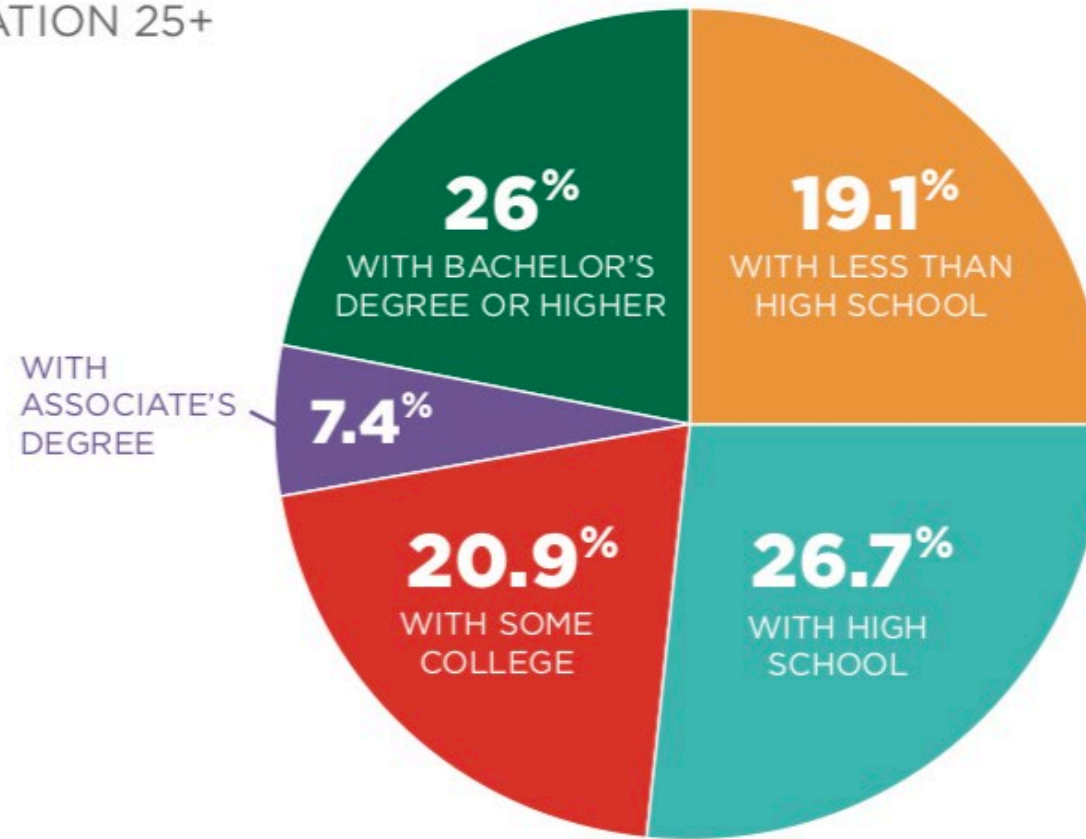
**RESULTS DRIVEN**  
**DATA INFORMED**  
**PEOPLE POWERED**  
**SYSTEMS FOCUSED**

## EDUCATION & WORKFORCE



### EDUCATIONAL ATTAINMENT (2016)

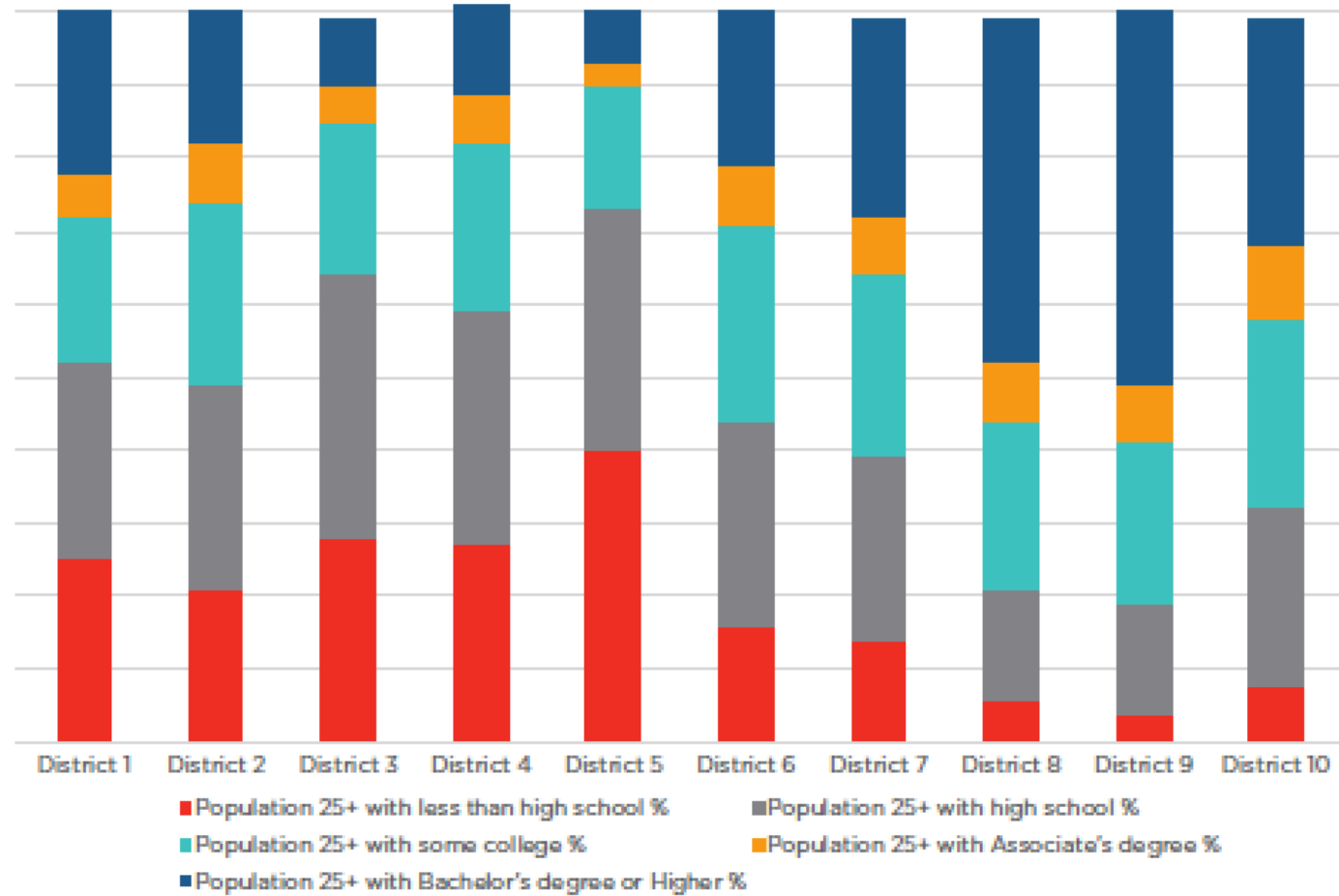
POPULATION 25+





## Districts 1-10, Educational Attainment, 2016

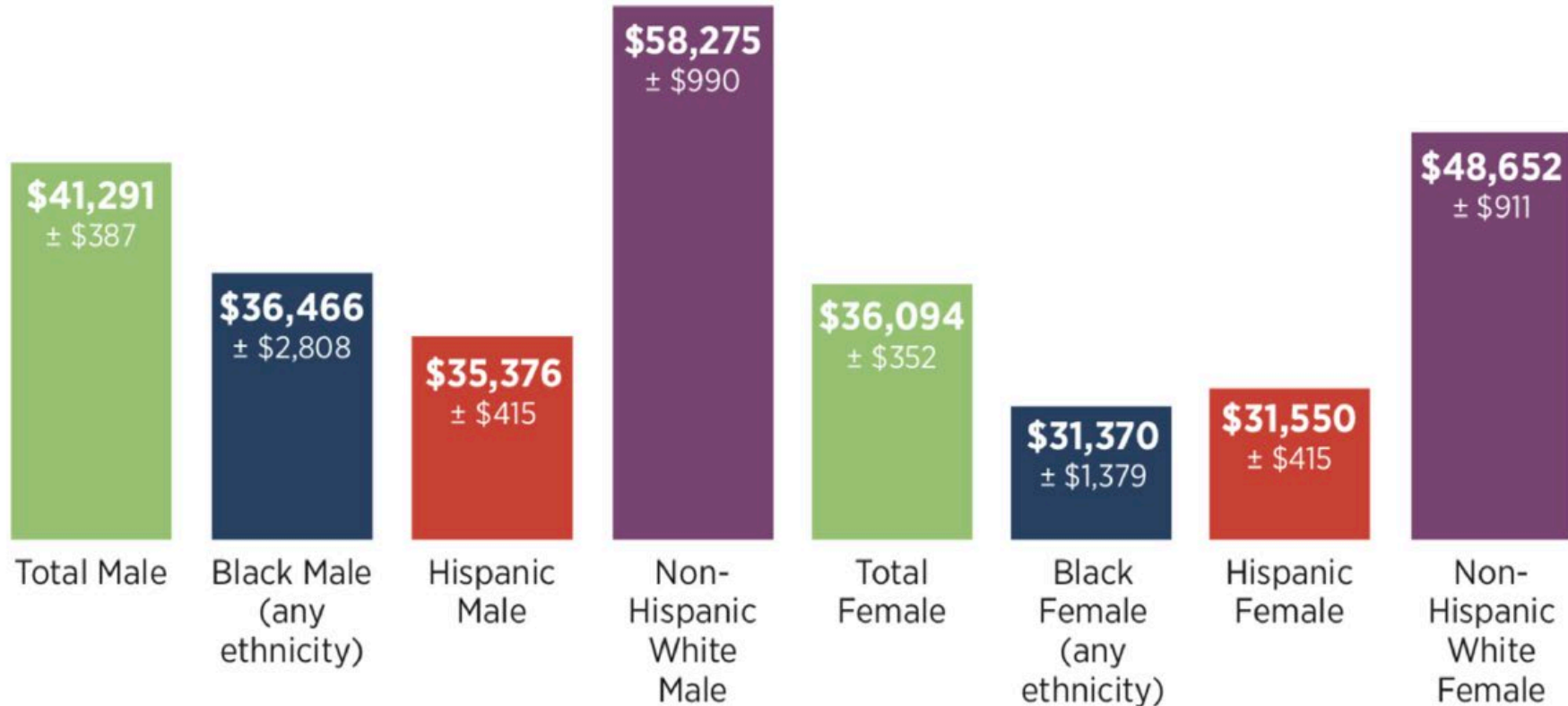
Source: U.S. Census Bureau, American Community Survey (ACS) 5-Year Estimates, Table S1501.





## Per Capita Income by Race & Gender, 2016

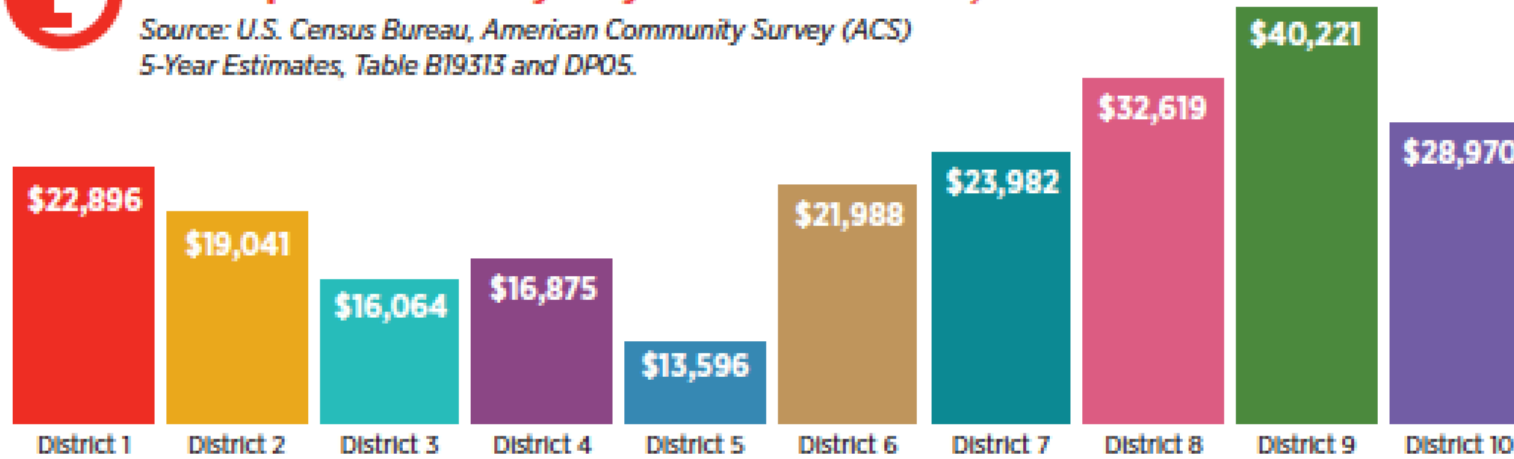
Source: US Census Bureau; 2016 ACS 1-Year Estimates, Table B20017I, B20017B, B20017H.





## Per Capita Income by City Council Districts, 2016

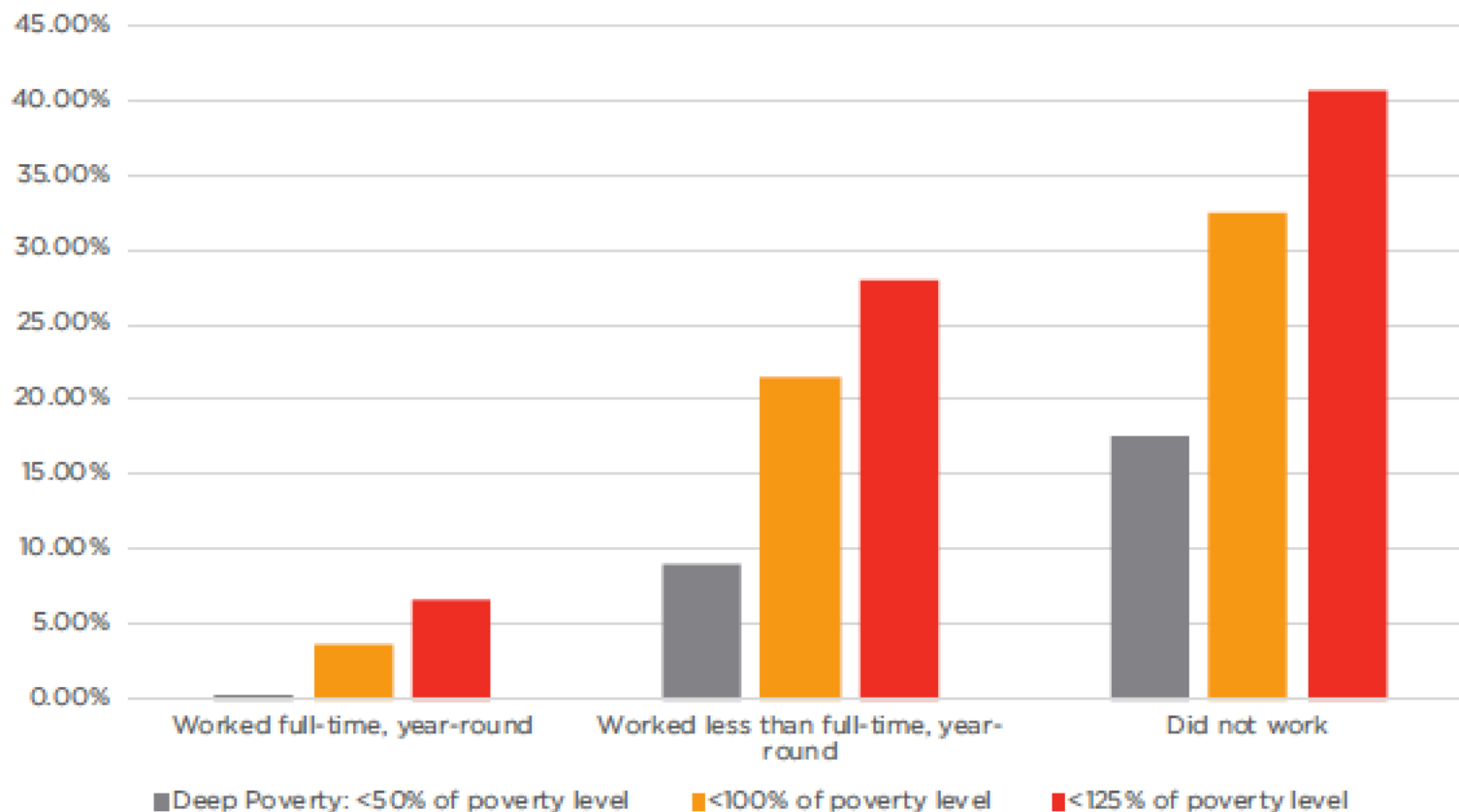
Source: U.S. Census Bureau, American Community Survey (ACS)  
5-Year Estimates, Table B19313 and DP05.





## Underemployment in San Antonio, 2017

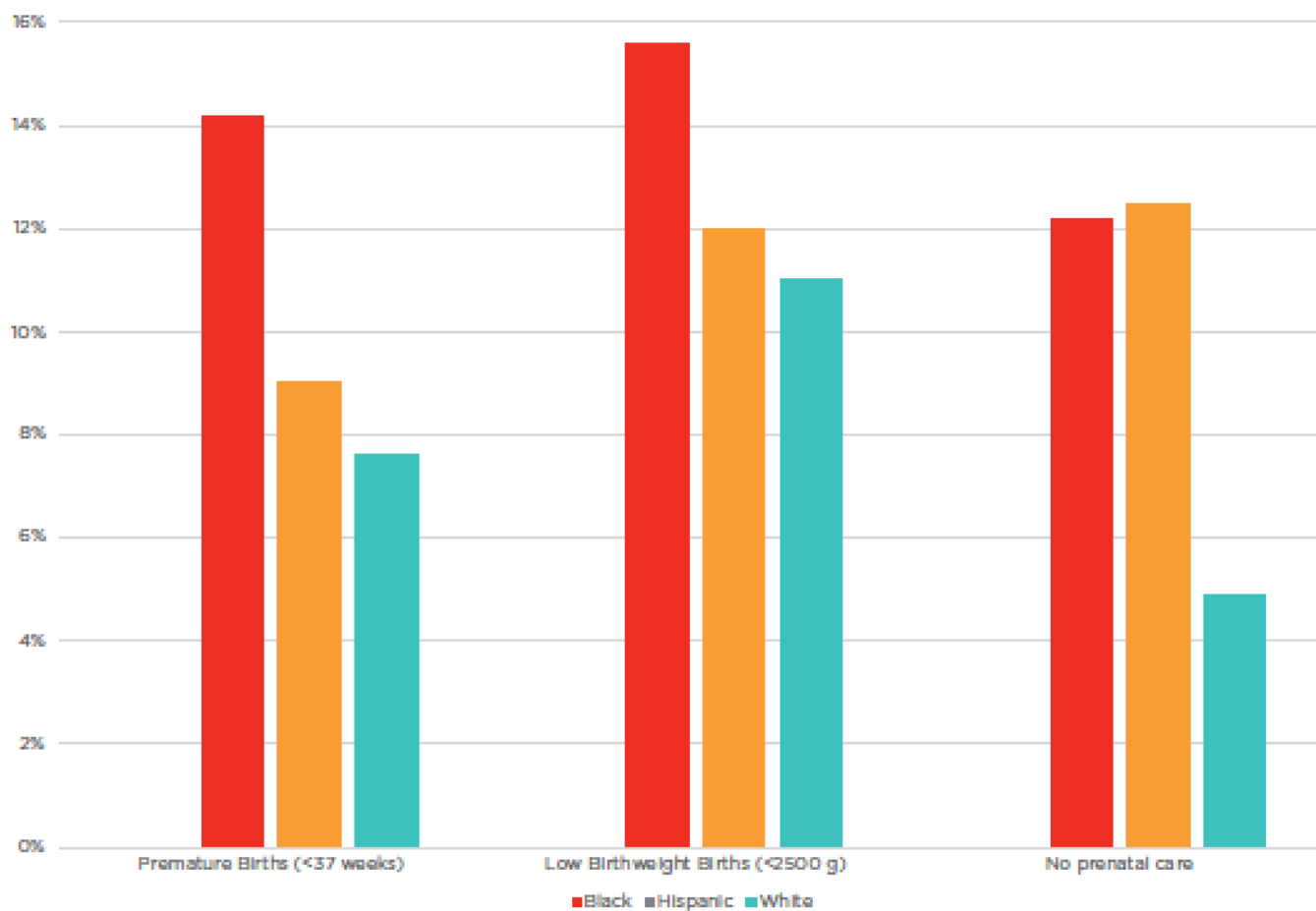
Source: US Census Bureau; 2017 ACS 1-Year Estimates, Table S1703.





## Births for Women of All Ages by Race/Ethnicity in Bexar County, 2015

Source: Texas Department of State Health Services, Online Query System (<http://healthdata.dshs.texas.gov/VitalStatistics/Birth>)

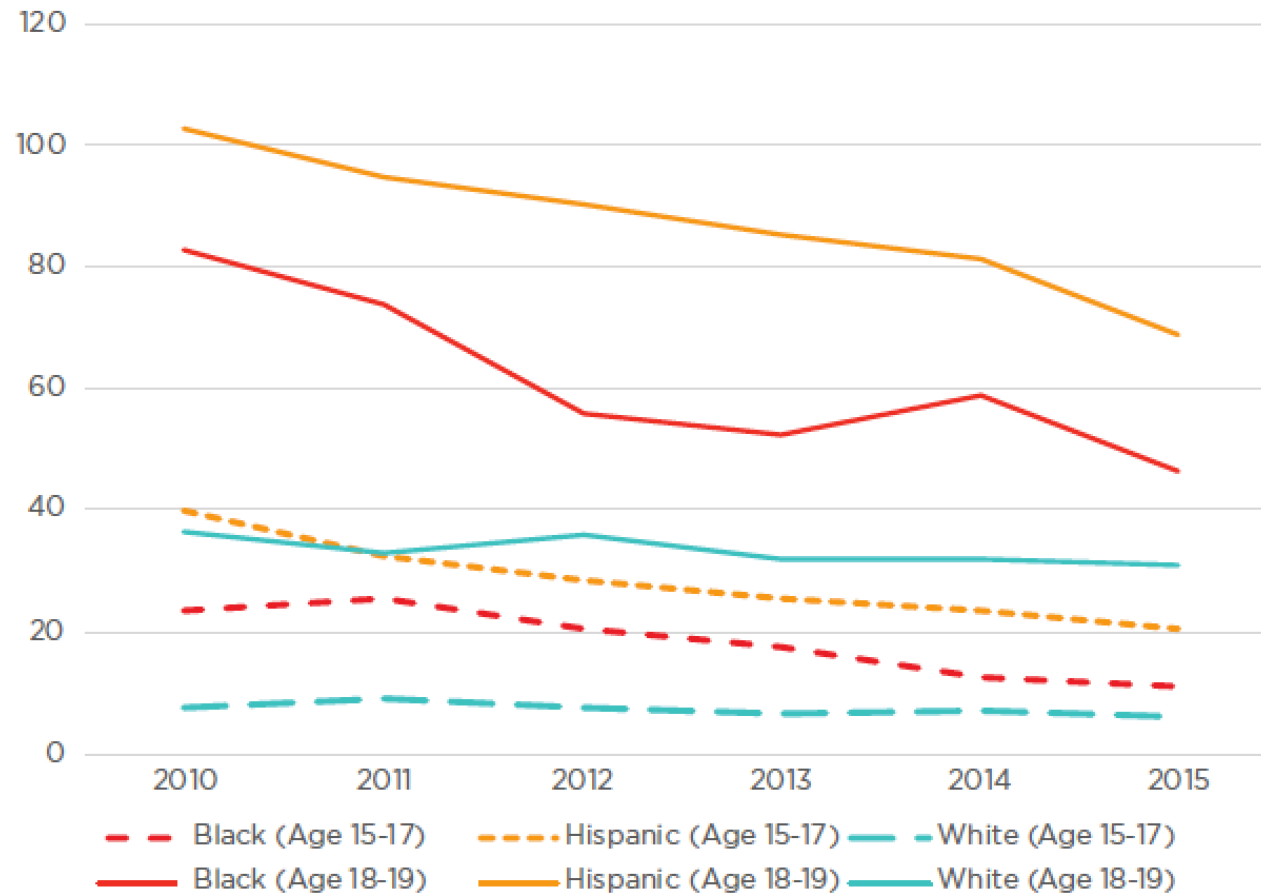






## Teen Birth Rate by Race/Ethnicity, 2015

Source: Texas Department of State Health Services, Online Query System (<http://healthdata.dshs.texas.gov/VitalStatistics/Birth>)





**SA2020<sup>®</sup>.ORG**



**/SA2020**

**@SA2020**

**@SA2020**

# We Can't "Leave it to Beaver" Anymore

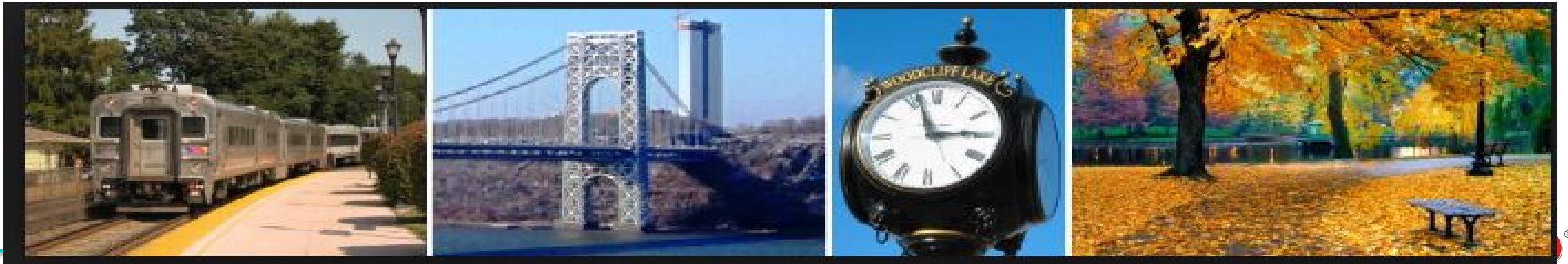
Unique Challenges of Bergen County:  
The most suburbanized county in the  
most suburbanized state



Lynne Algrant  
CEO

# Bergen County, NJ

- Most populous county in NJ—948,406 people
- Just across Hudson River from NYC
- In the NYC media market
- ~~Excellent daily paper; several weekly regional papers.~~





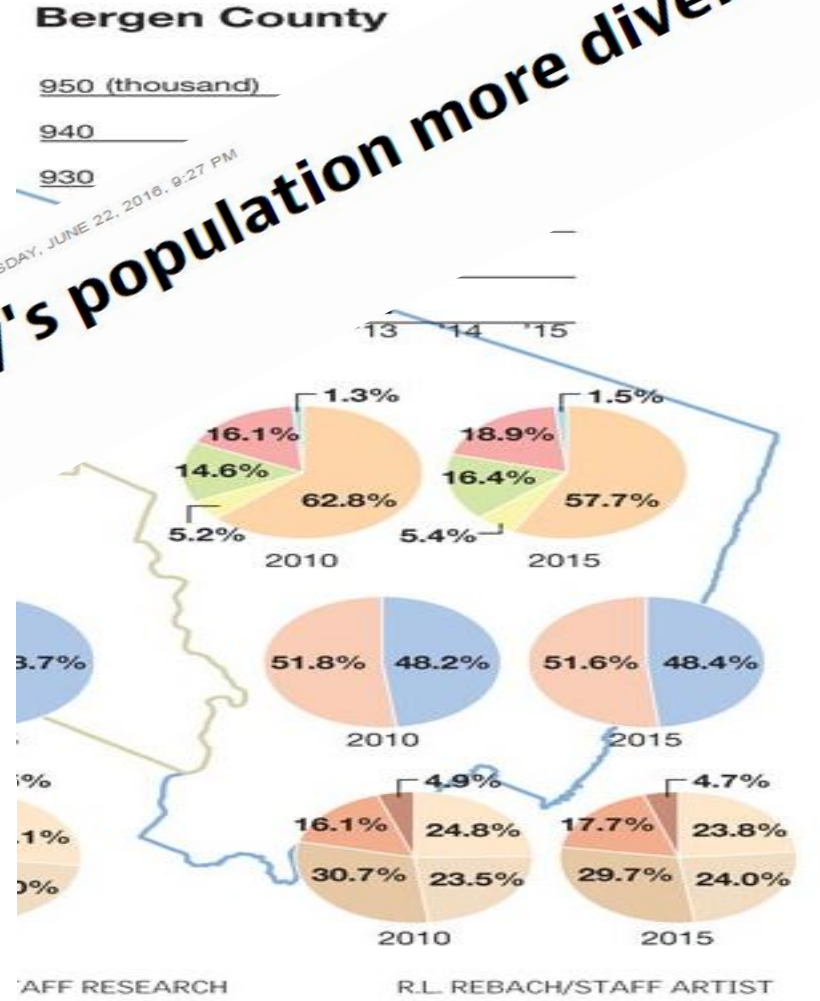
# A Week in Bergen County



JUNE 19, 2016 LAST UPDATED: SUNDAY, JUNE 19, 2016, 12:27 PM

**Building a different N.J.: Multifamily housing coming to towns that want it**

**North Jersey's population more diverse, older**



# Local Government

- 70 Municipalities
  - Largest population—Hackensack--43,010
  - Smallest population—Teterboro--67
- 75 School Districts
- “Only three candidates — including XXXX — sought school board seats in the November election, each running essentially unopposed.”
  - [The Record 4/14/16](#)

# Silos

- 6 different meals-on-wheels programs
- 3 regional and 20-30 local chambers of commerce





# Voting Patterns

- In 2018 **62% of registered voters voted**. Congressional election, school board elections, some Mayoral/City Council elections.
- June 2019 primary election: 6% of registered voters (Democrats and Republicans)



# Demographics

- Significant Racial, Religious and Language Diversity
  - Largest Jewish population in NJ
  - All 10 of the US communities with the largest %age of Koreans and Korean Americans are in Bergen County
  - Latino population is growing rapidly
- Aging population is growing
  - 16%
  - Trend to “age in place”

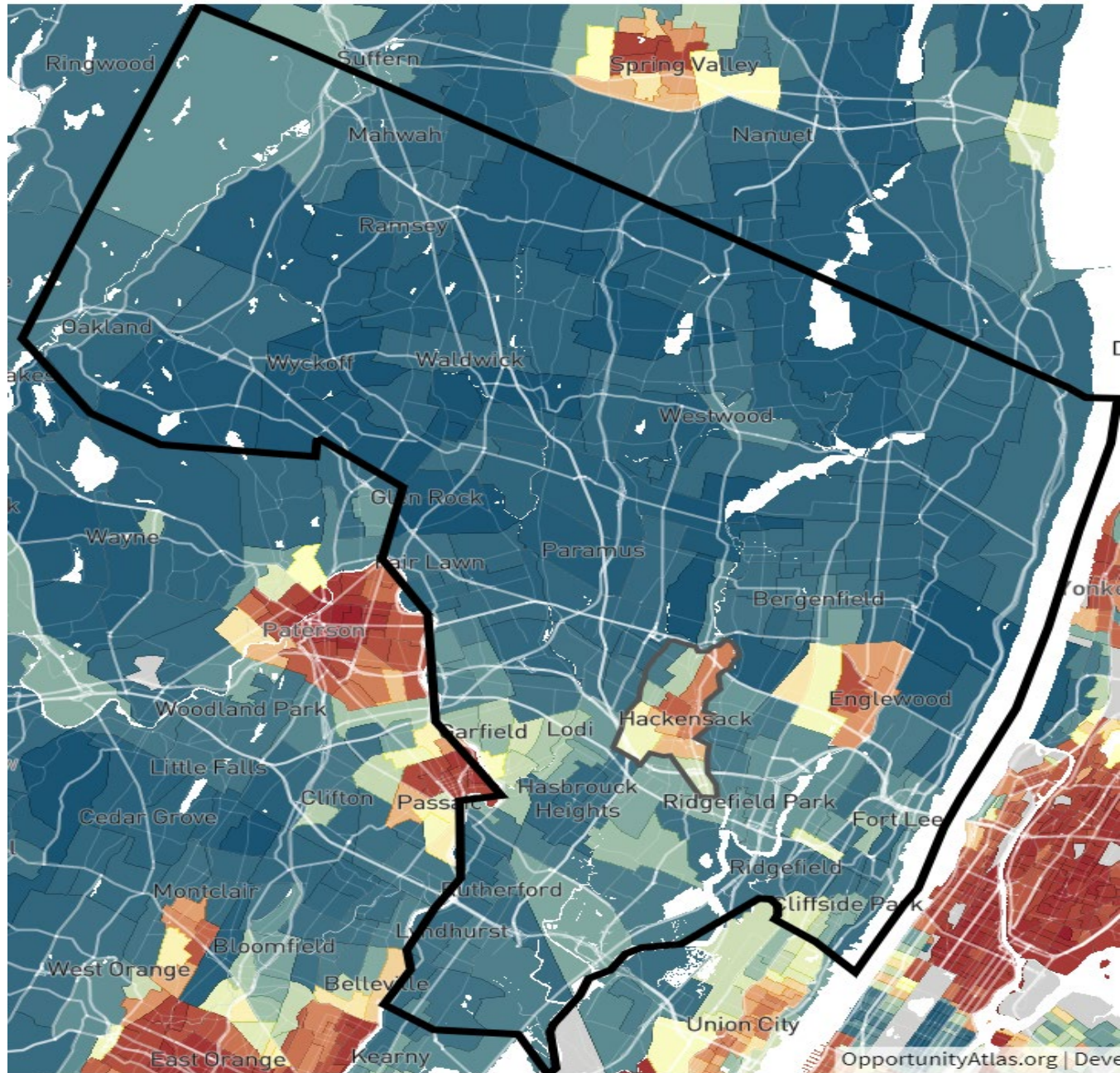


# Affluence and Need

- Median household income--\$84,677
- 4 Communities in the top 500 wealthiest zip codes
  - Alpine ranked #12; average home \$4.9 million
- ALICE Indicators—30% of households struggle to afford basic needs. (8% Poverty, 22% ALICE)
- Bergen County ranks 219 of 225 studied communities for affordability.

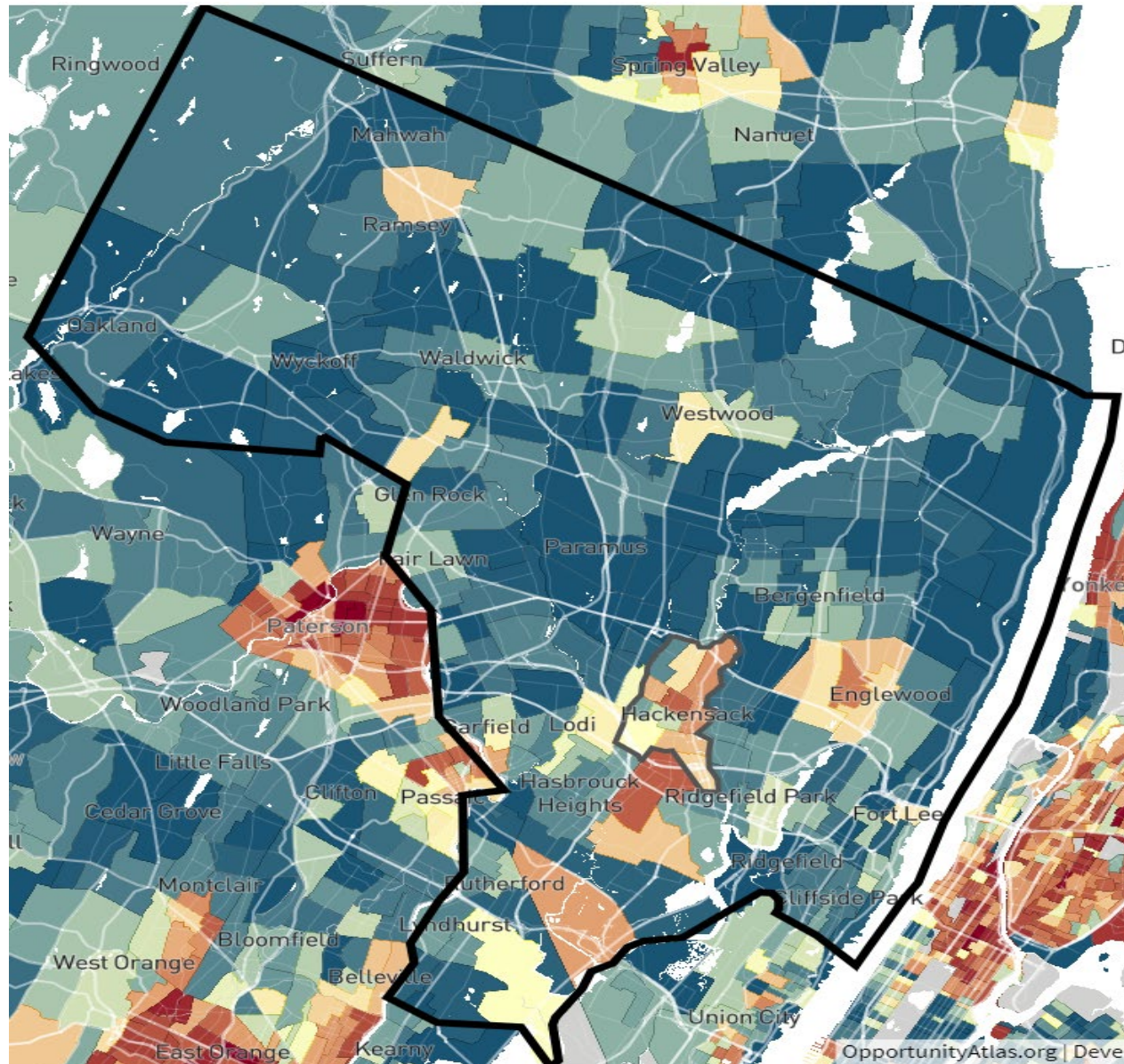
# ALICE & Poor Households

Type of Household	ALICE	Poverty
Single or Cohabiting	21%	7%
Families with Children	16%	8%
65+	31%	10%



Household  
Income in their  
30's if you  
grew up in this  
neighborhood

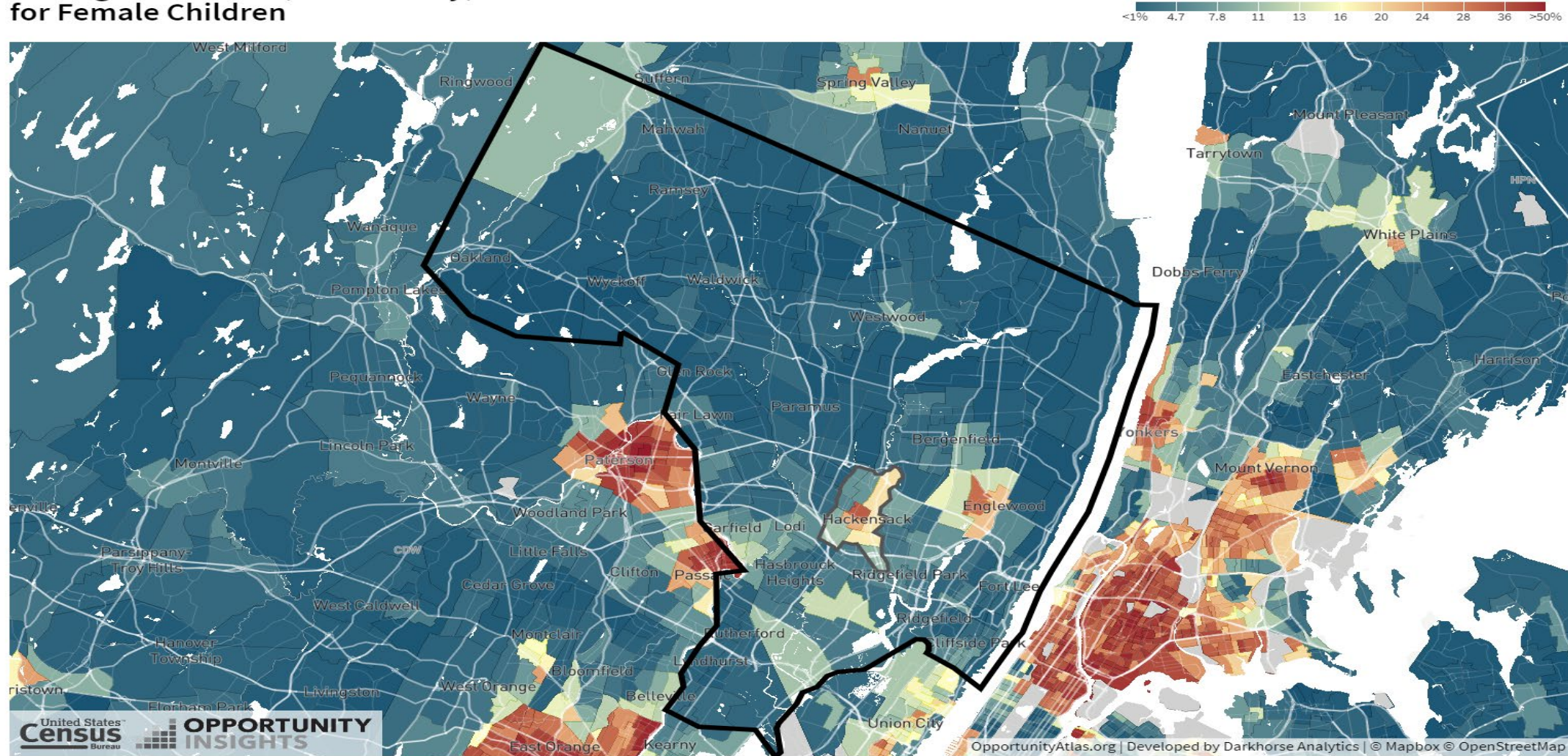
Rust = < \$10k



Likelihood you  
were  
Incarcerated on  
4/1/2010 if you  
grew up here

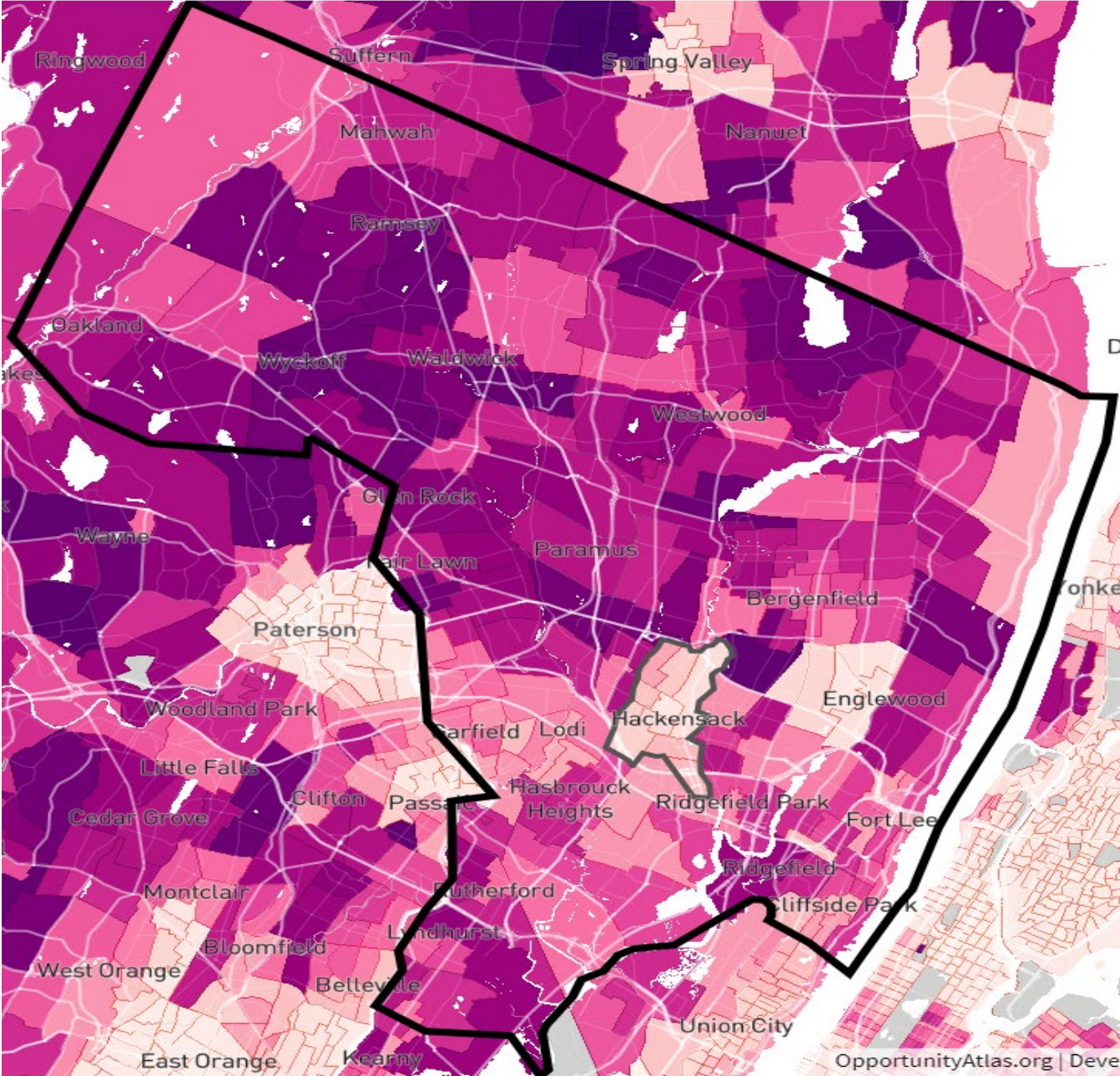
# Teen Motherhood if you grew up here

Teenage Birth Rate (women only)  
for Female Children



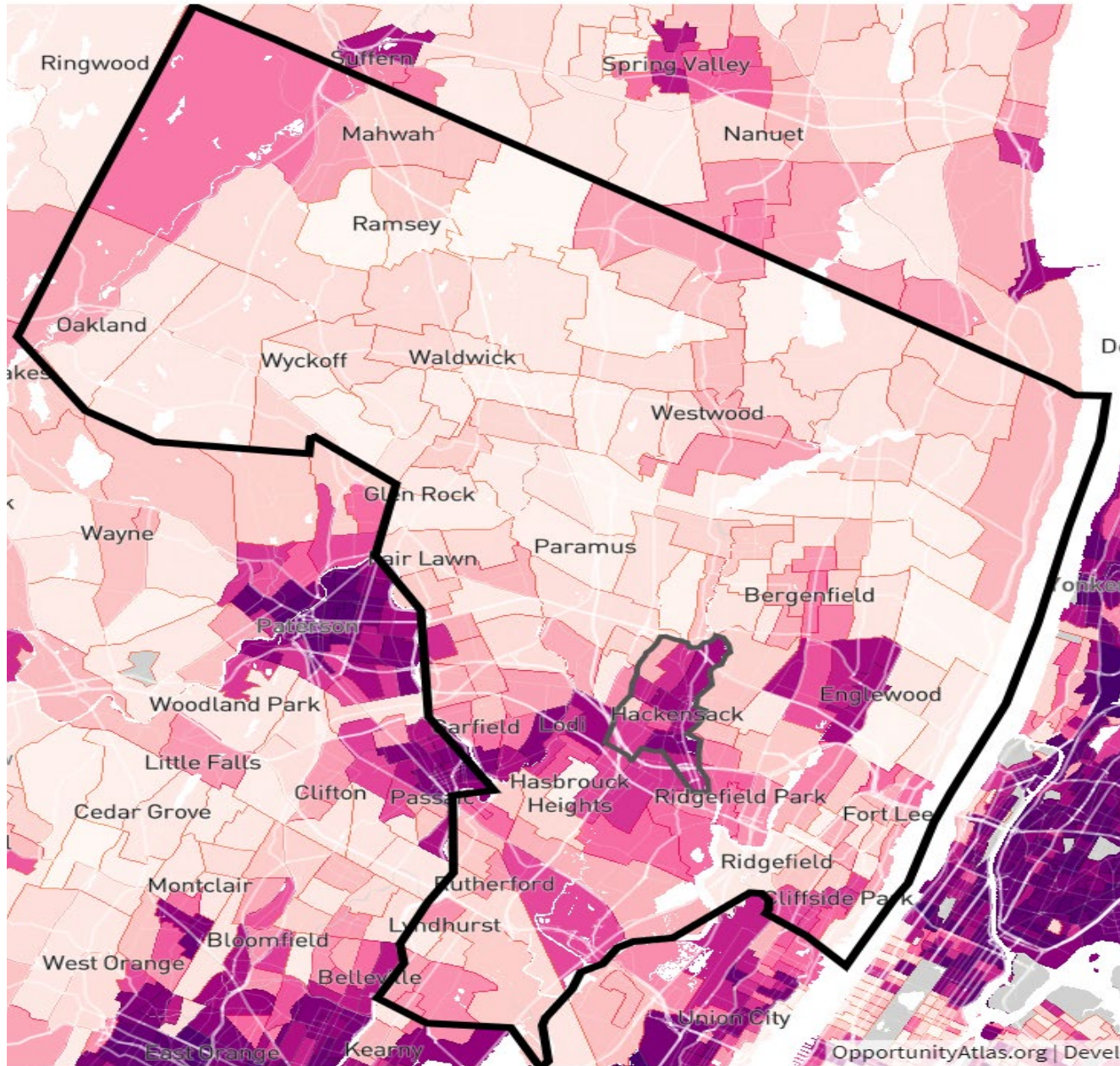
# Married in their 30's if grew up here

Light Pink = <5% Married





# Single Parents 2012-2016



# Children in Poverty

- Overall 7%
  - White Children: 5%
  - Black Children: 16%
  - Hispanic Children: 19%



# Education

- There are 25 municipalities with a combined ALICE/Poverty rate of 32% or more.
- 54 schools with 3<sup>rd</sup> graders;
- **31 of these schools have fewer than 60% of 3<sup>rd</sup> graders who have met or exceeded reading assessment expectations.**

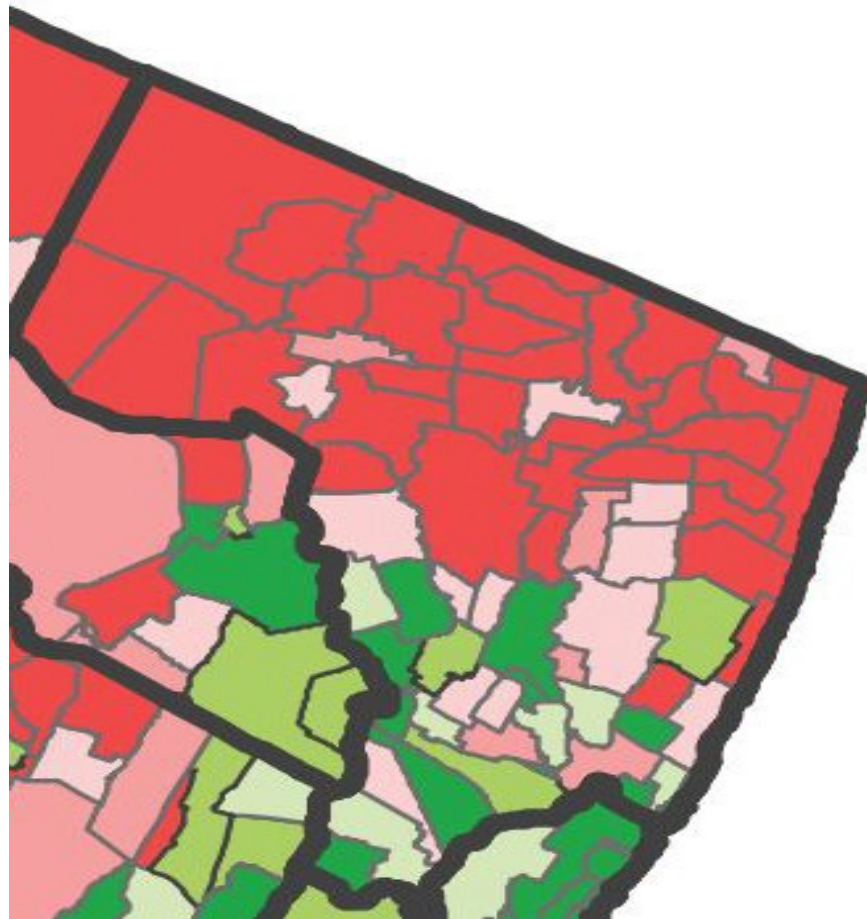


# Health



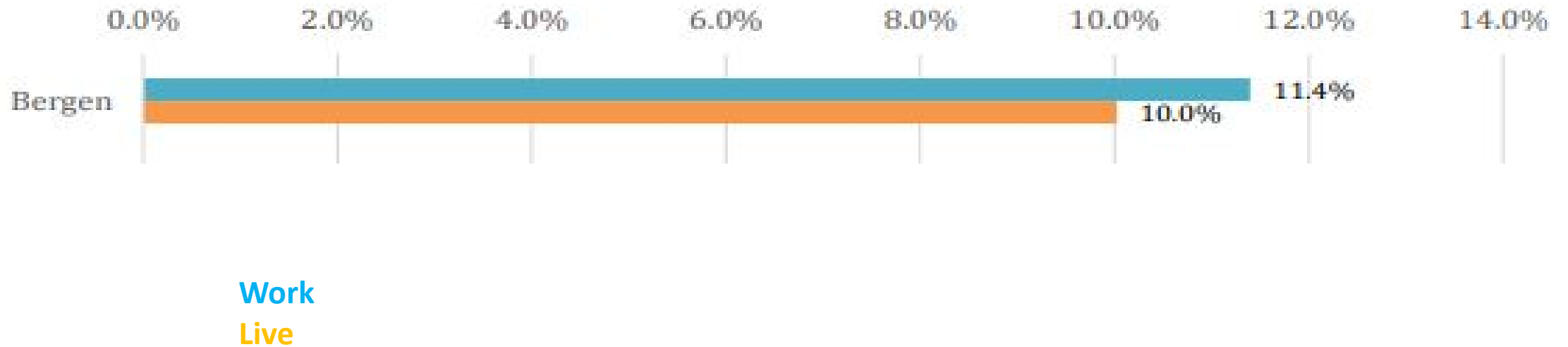
- Diabetes rate: 9%
- Adult Obesity: 23%
- Maternal/Child Health grade: C (NJ ranks 47<sup>th</sup>)
  - Early Pre-natal care: 79.9%
  - Low Birth Weight: 8%
    - White: 7% Black: 13% Hispanic: 8%
  - Teen Births
    - White: 2% Black: 12% Hispanic: 12%

# % of Population 22 to 34



# Millennials

Distribution of 19-34 cohort in 2016 by county<sup>21</sup>



# Unilever HQ Englewood Cliffs



# Nonprofits & Volunteerism

- Approximately 800 nonprofits with budgets between \$100,000 and \$1.5 million
- Social safety net; arts and culture
- Approximately 12,000 board members needed
  
- Only 4 paid fire departments in Bergen County
  - Moving to hybrid departments
- Volunteer ambulance corps
  - Moving to nights and weekends only; paid EMTs during the day





# Trends

- Dramatic shift in corporate support for nonprofits
- Fundraising is still event driven
- Competing with national, regional and NYC nonprofits for individual donors
- Family foundations
- Tax code changes



# What Nonprofit Leaders Want You to Know

- Doing more with fewer resources
- Hard to hire well, compensate and retain employees
- General operating and overhead support is a real need
- We want to collaborate more, but do not have the people power to do that well



Lynne Algrant

CEO

201-489-9454 ext 201

[Lalgrant@bergenvolunteers.org](mailto:Lalgrant@bergenvolunteers.org)

[www.bergenvolunteers.org](http://www.bergenvolunteers.org)