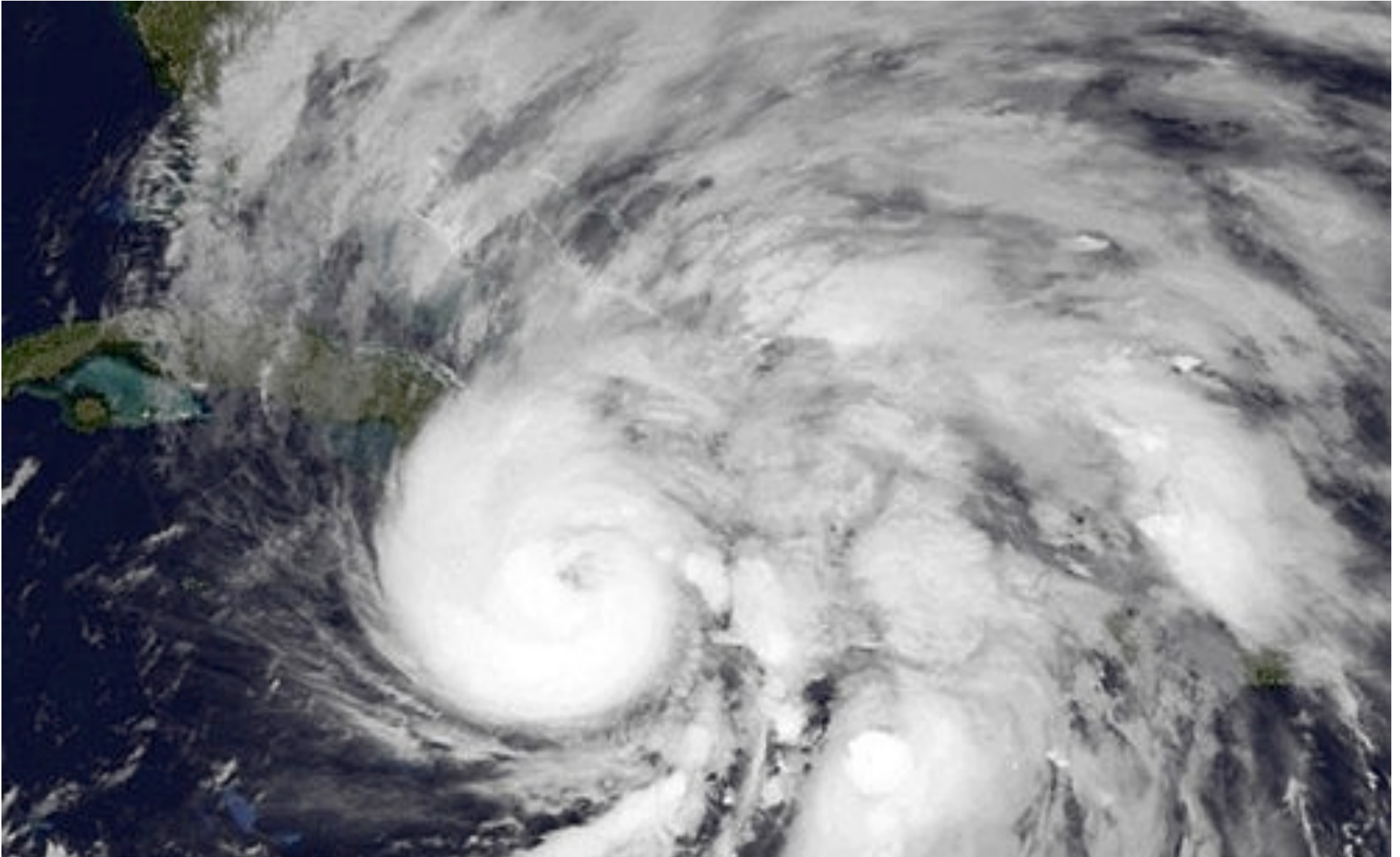


NJ Resiliency Network

*Leveraging public and private resources for
long-term community recovery and resiliency*



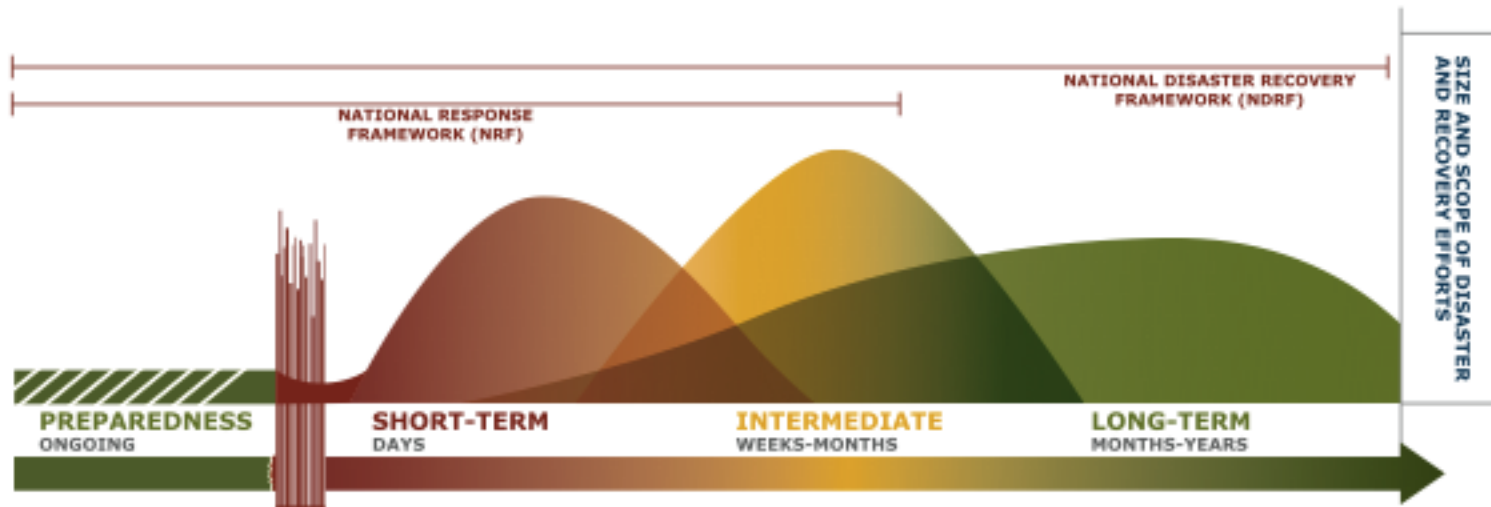
THE SANDY CONTEXT



Disaster Recovery is Complex



Recovery can take 5- 10+ years



First Responders (health and safety)



Short and Long-Term Recovery

Grants, assistance and resources differ according to applicant

- ✓ Individuals
- ✓ Businesses
- ✓ Municipalities

Businesses



AFFECTED BY A RECENT DISASTER?

Apply for assistance from the U.S. Small Business Administration:

- disaster loans for homeowners & renters
- disaster loans for non-profits & businesses of all sizes.

[CLICK HERE to learn more!](#)

All SBA programs and services are extended to the public on a non-discriminatory basis.



Individuals



Municipalities

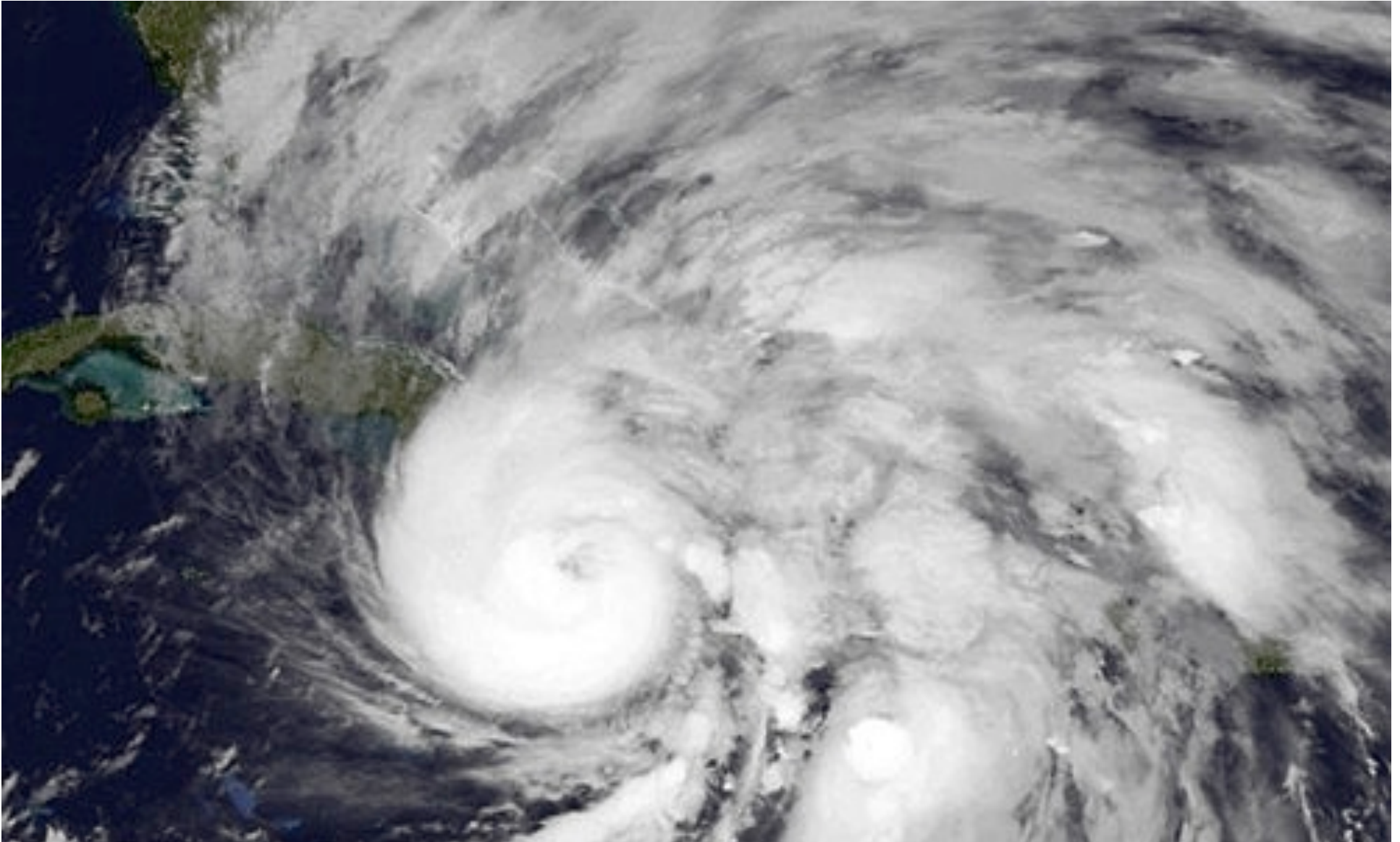


Hurricane Sandy deals big blow to N.J. towns' property tax rolls

comments



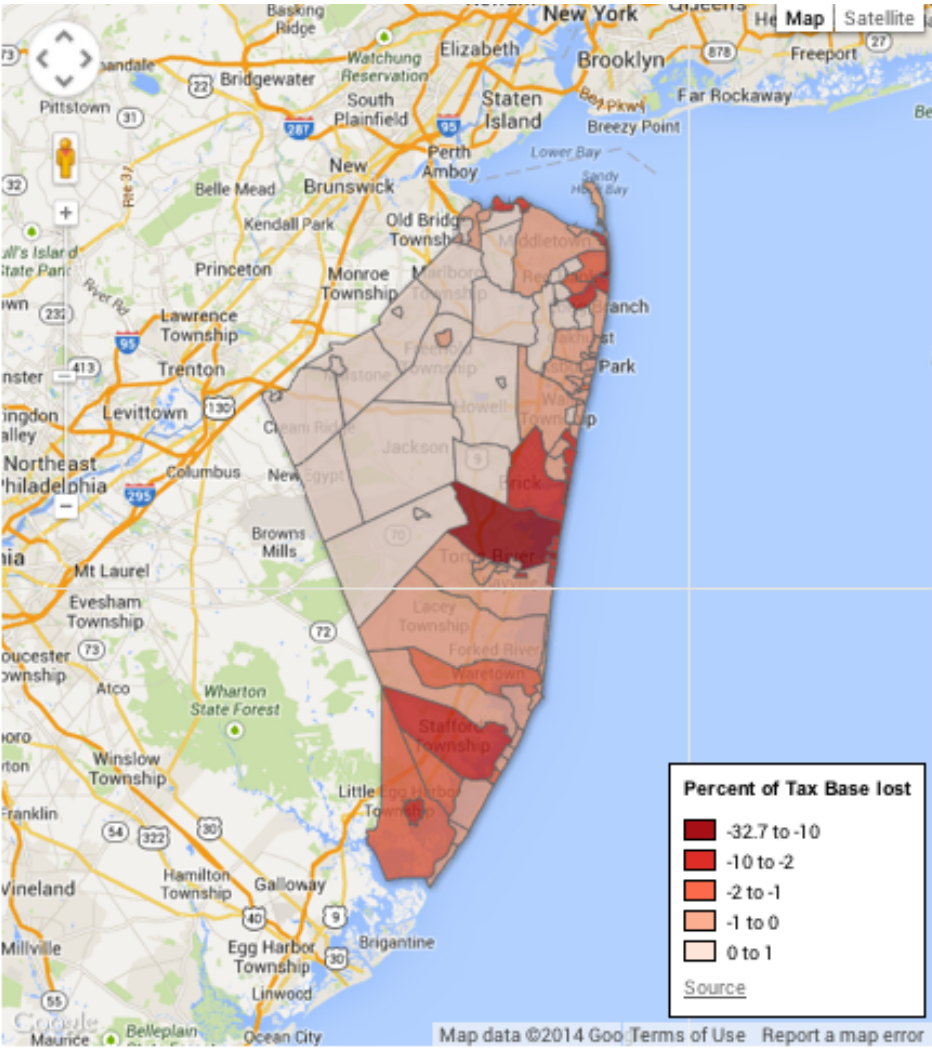
WHAT ARE MUNICIPALITIES FACING?



Recovery Issues



Loss of Revenue



Coastal Mitigation and Environmental Degradation



Loss of Community Character



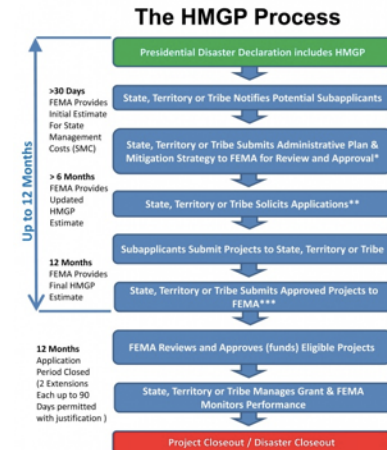
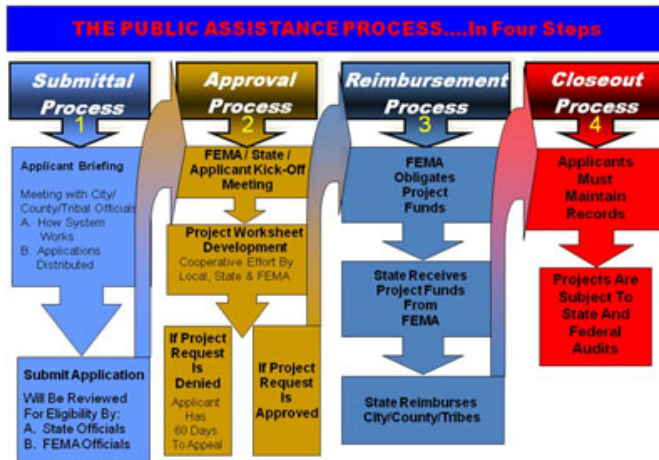
Vulnerable Critical Facilities



LOCATING COMMUNITY RESOURCES



Community Recovery Grants and Assistance



* An HMGP Administrative plan is required prior to receiving HMGP funding.
 ** Technical assistance can be requested by the Applicant at any point in time.
 *** HMGP projects can be submitted at any time during the initial 12 months.
 States and Tribes are encouraged to submit projects early after the Disaster.

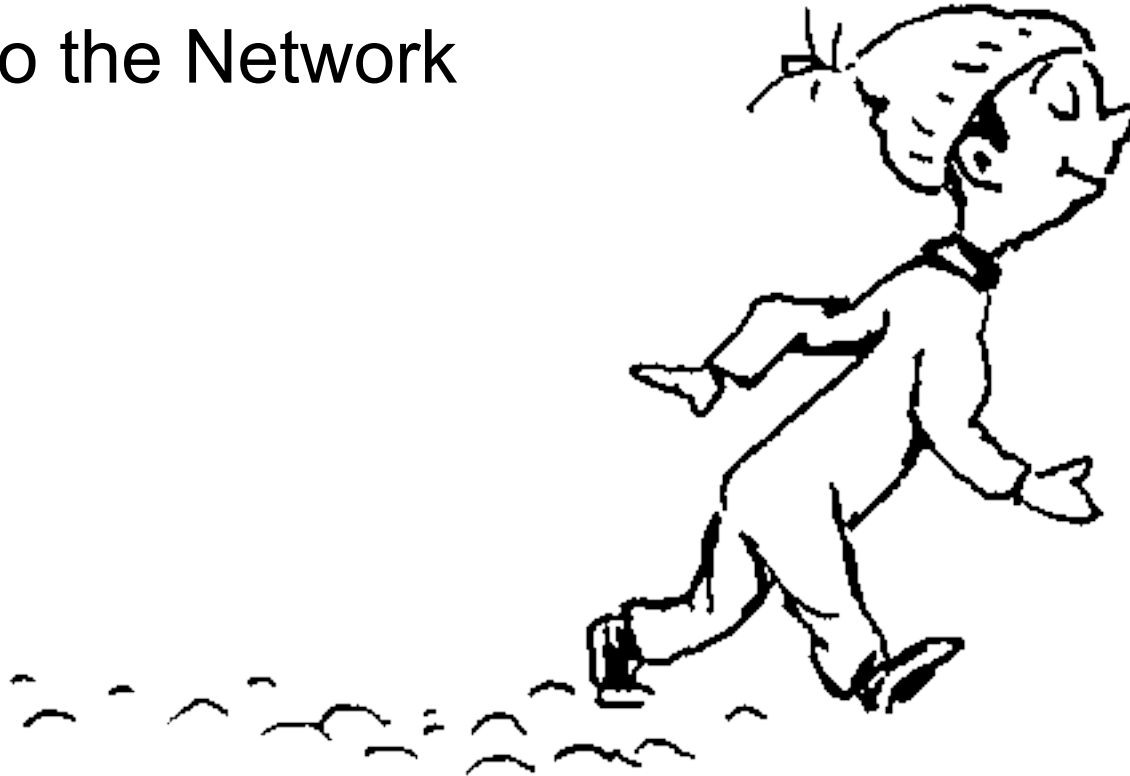


Community Technical Assistance??

Develop a Funding Approach



.....to the Network



NJ Resiliency NETWORK

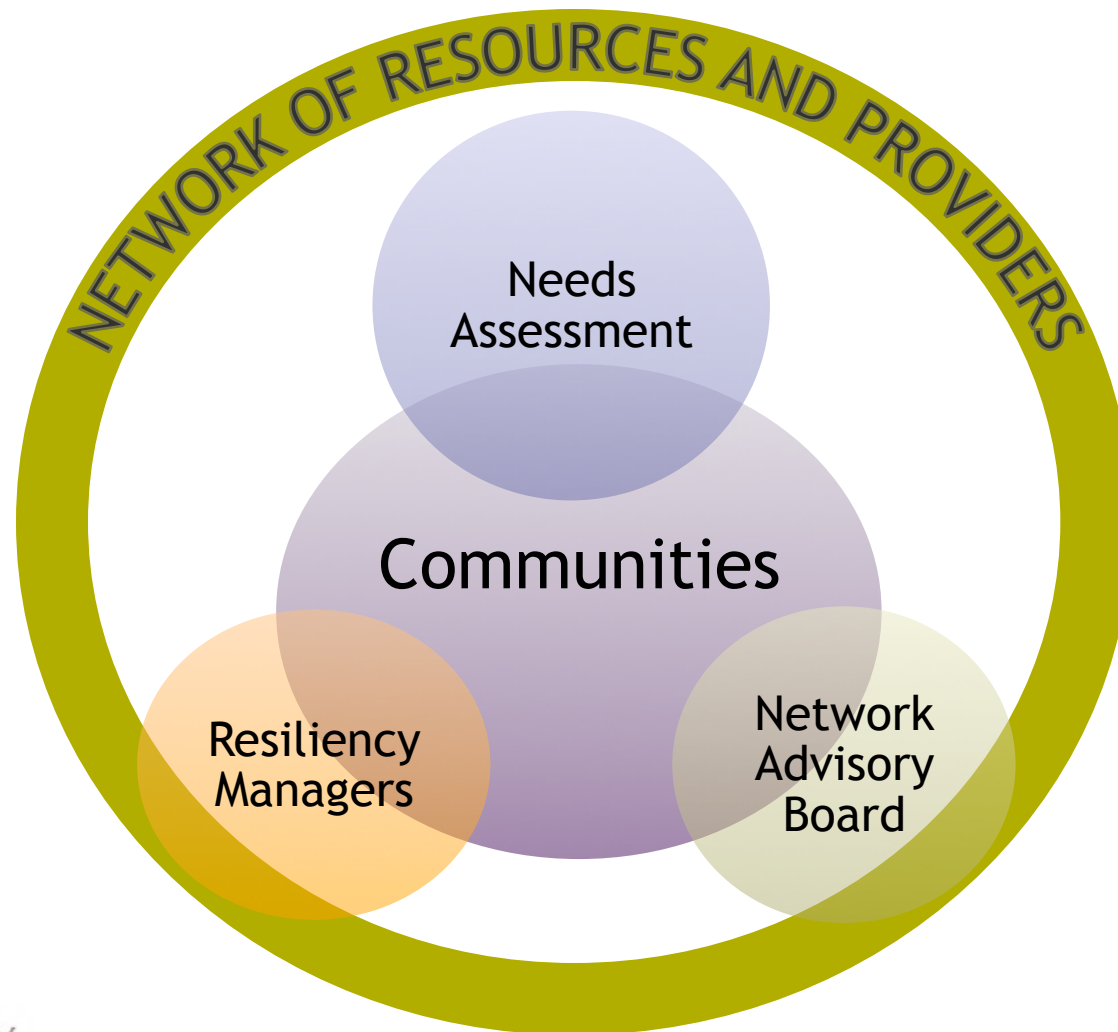


NJ Resiliency NETWORK

- ✓ Connects communities *with technical and financial resource.*
- ✓ Leverages resources provided by *public and private organizations*
- ✓ Provides *public forums* for idea exchanges
- ✓ Provides *new research and best practices*
- ✓ Funded *by NJ Recovery Fund and Surdna Foundation.*



NJ Resiliency NETWORK



How Do Towns Get Assistance?

R^{NJ} RESILIENCY NETWORK
Moving New Jersey communities beyond recovery

SUSTAINABLE JERSEY CERTIFIED
A Better Tomorrow, One Community at a Time

About Resources Community Assistance In the Media Events

The NJ Resiliency Network is a post-Sandy initiative that matches municipal recovery and resiliency needs with resources provided by government, private, non-profit and academic organizations. [Learn more.](#)

HEADLINES

- Rebuild by Design aims to transform coastal life**
FEB 06, 2014
- Christie Administration Rolls Out Plan For Second Round Of Federal Sandy Recovery Funds**
FEB 03, 2014

UP COMING EVENTS

- State of New Jersey Superstorm Sandy Public Hearing**
Richard Stockton College of New Jersey - Performing Arts Center (PAC)
FEB 11, 2014 - 04:00 PM TO FEB 11, 2014 - 07:00 PM
- Together North**

For Communities

Resources and assistance are now available to post-Sandy municipalities through the Network.

We connect you with available tools, grants and technical assistance for both your long-term recovery and resiliency planning needs.

While some of these resources are already available to communities, others are new resources recently contributed by our

For Resource Providers

Does your organization have resources to help post-Sandy communities?

Both government and non-governmental organizations (NGOs) play an important role in assisting municipalities in long-term recovery and resiliency planning.

All types of technical and financial assistance are needed, such as model ordinances, mitigation consultations, design guidelines, community workshops,

Examples of Network Resources

Economic Recovery



Designs assistance for elevated commercial buildings and streetscapes



Wet and dry flood proofing guidelines



Niche marketing, revitalization and branding assistance

Examples of Network Resources

Housing Recovery



Designs for elevated homes and streetscapes



Accessibility Options (stairs, lifts elevators, etc)



Model ordinances for property maintenance and abandoned homes

Examples of Network Resources Administrative and Policy



Searching and preparing grants



Model floodplain ordinances, vulnerability risks and habitat assessment, mapping



Public engagement, shared services assistance, multi-jurisdictional meetings

Current Network Projects

- Community Needs Assessment
- Getting to Resiliency
- Climate Adaptation Task Force
- Recruiting partners & resources
- Coordinating project results statewide
- Network Advisory Board
- NOAA/Rutgers Best Practices Compendium

Select Resource Providers



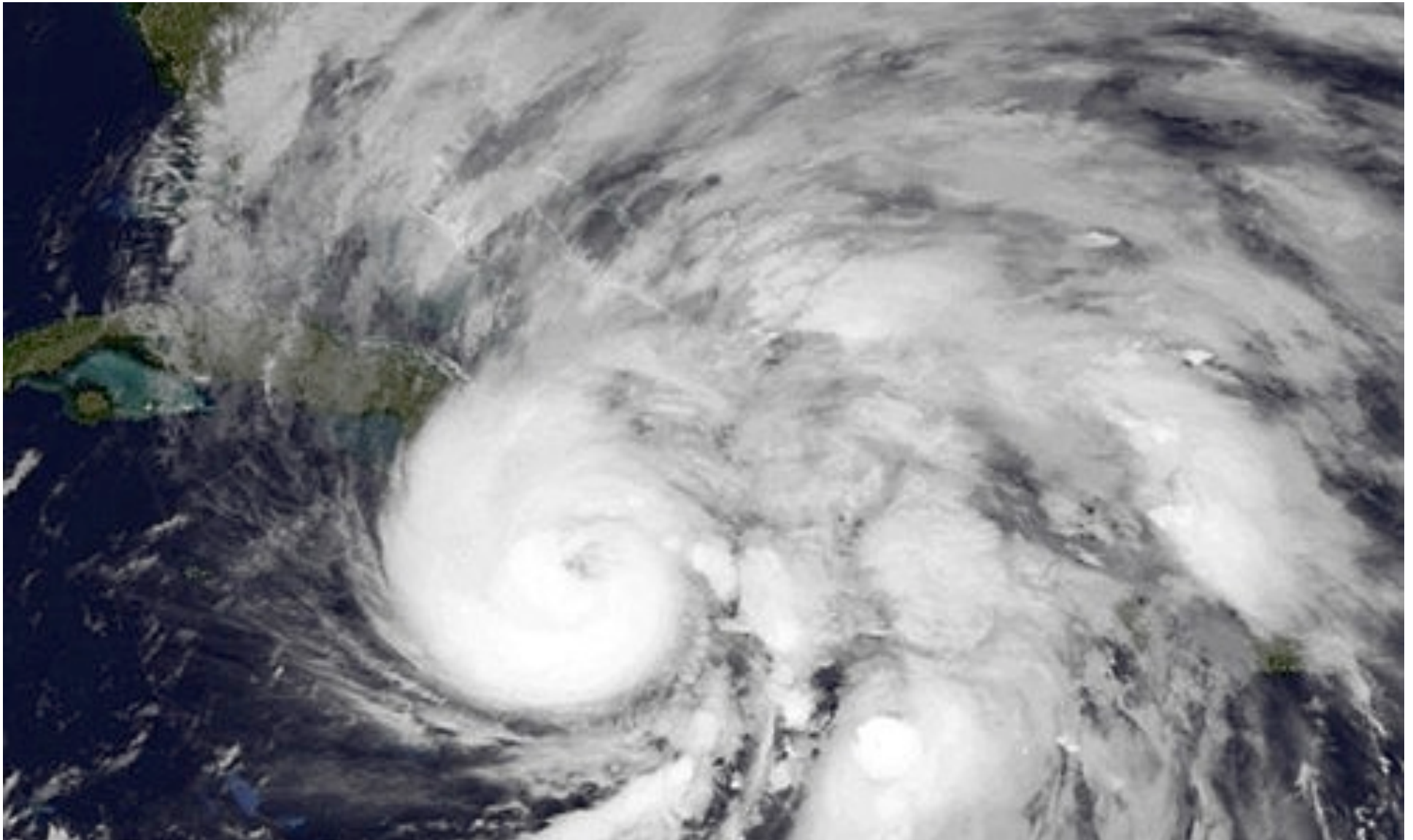
URBAN COAST INSTITUTE



NJ Climate Adaptation Alliance



Recovery & Resiliency Efforts of Others



FEMA (Federal Emergency Management Agency)



FEMA (Federal Emergency Management Agency)



*Resiliency
Partnerships???*

Community Recovery/Resiliency Assistance

Universities

State agencies

Non-profits

STEVENS INSTITUTE OF TECHNOLOGY
THE INDEPENDENT UNIVERSITY

Sandy Spurs Advancements in Storm Prediction, Coastal Adaptation and Infrastructure Resiliency

Stevens Research Informs Preparedness, Recovery and Policy

Hurricane Sandy opened the public's eyes to the damage floods from coastal storms can inflict, killing 147 people, damaging or destroying more than 650,000 homes, temporarily shuttering thousands of businesses and disrupting millions of lives.

From the initial destruction caused by the intense winds and massive coastal flooding, to the loss of power and the impact on basic infrastructure and services upon which citizens depend, nowhere was this more apparent than Hoboken, New Jersey, hometown of Stevens Institute of Technology.

During Sandy, Stevens research center focused on Laboratory, a renowned research center focused on coastal urban resiliency, braved some of the worst conditions the storm had to offer to provide real-time storm threat assessments, flood forecasting predictions and other essential information to the media, the public, and government scientists and policymakers. Then immediately after the storm, Stevens researchers provided expert guidance on a smart and effective recovery throughout the bi-state region.

Stevens experts contributed to national media coverage of Sandy, its impacts, and the recovery.

Today, Stevens researchers are continuing to contribute critical knowledge and expertise to the ongoing national conversation about the serious global challenges presented by a changing climate, the impacts on coastline communities and citizens, and the broader implications for infrastructure resiliency. Their cutting-edge research is informing policy discussions at state and national levels about strategies to ameliorate the effects of the next major storm.

Stevens storm prediction capabilities include forecasting a storm's track and the expected storm surge.

www.stevens.edu • 1

Getting to Resilience™

A Coastal Community Resilience Evaluation Tool

March 2011
Office of Coastal Management
New Jersey Department of Environmental Protection

ASSESSING THE IMPACTS OF HURRICANE SANDY ON COASTAL HABITATS



Prime Hook National Wildlife Refuge Before and After Sandy

By: The American Littoral Society
For: The National Fish and Wildlife Foundation
December 17, 2012



NJ Resiliency Network....

- Central, organized source of resources
- Leverages private and non-profit resources
- Coordinates research and resiliency efforts across the state
- Feed-back loop reports on conditions, and responds to them
- A new model. Fluid process. We'll keep you updated.



Questions & Answers

