

# Welcoming Dave Ellis



MARIA VIZCARRONDO  
President & CEO  
*Council of New Jersey  
Grantmakers*

CHRISTINE BEYER  
Commissioner  
*New Jersey Department of  
Children and Families*

ATIYA WEISS  
Executive Director  
*The Burke Foundation*

ARTURO BRITO  
Executive Director  
*The Nicholson Foundation*

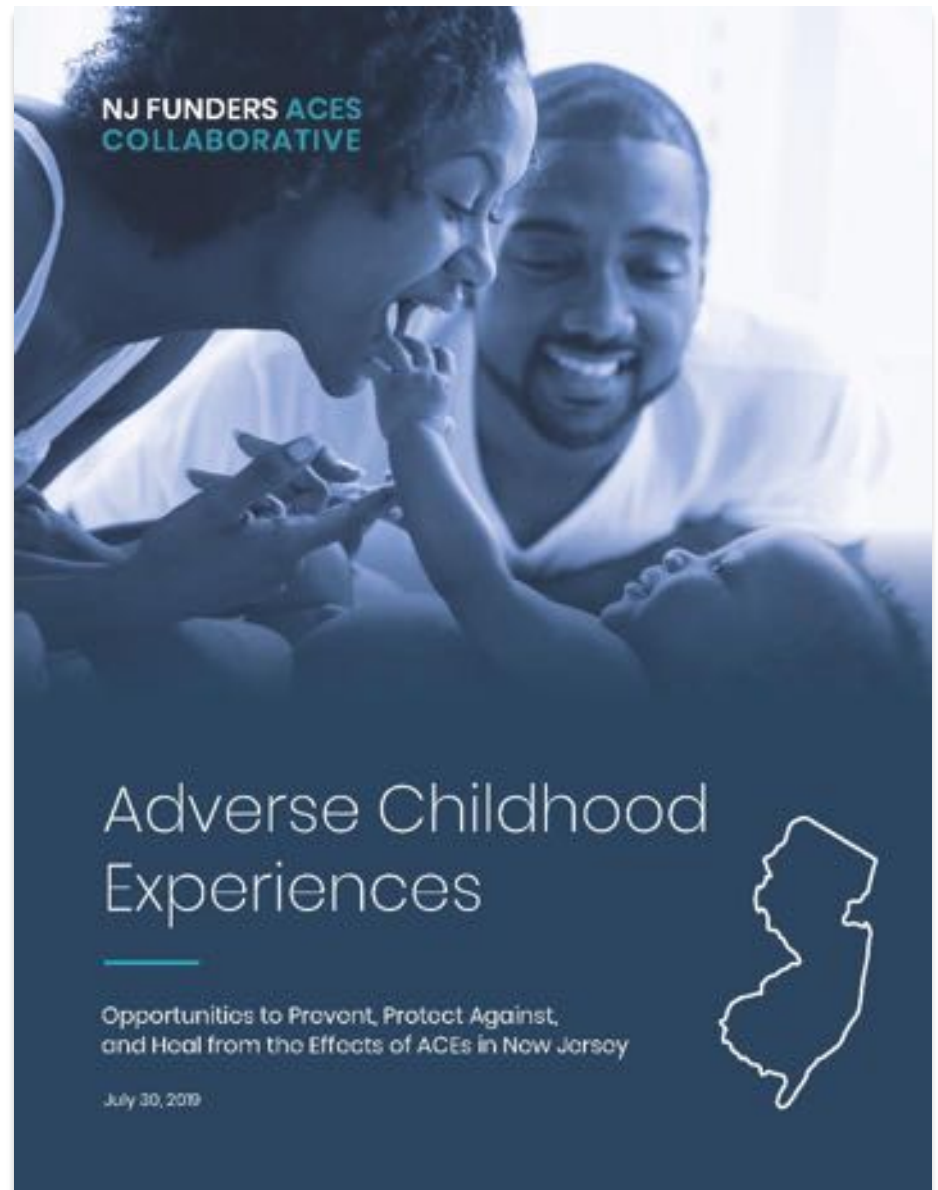
CURT FIELDS  
President & CEO  
*Turrell Fund*

# Addressing Adverse Childhood Experiences (ACEs) in New Jersey

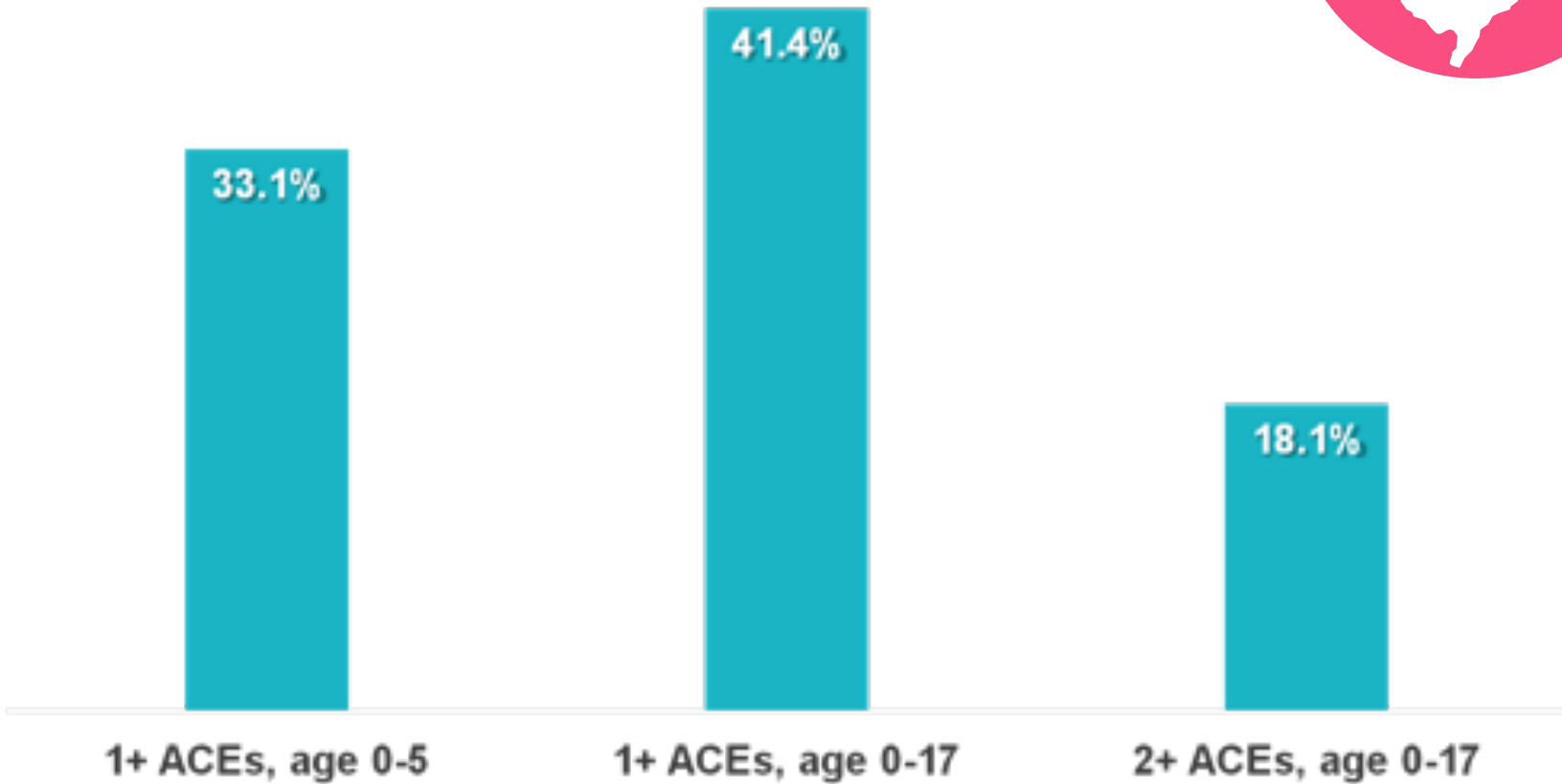


# Defining ACEs

Adverse Childhood Experiences (ACEs) are stressful or traumatic events that occur before the age of 18.



# ACEs in New Jersey: Prevalence Among Children



# The Work of DCF: Most Commonly Cited ACEs

## NEGLECT

Physical

Psychological/Emotional

## ABUSE

Physical

Sexual

Psychological/Emotional

## HOUSEHOLD DYSFUNCTION

Domestic Violence

Substance Misuse/Abuse

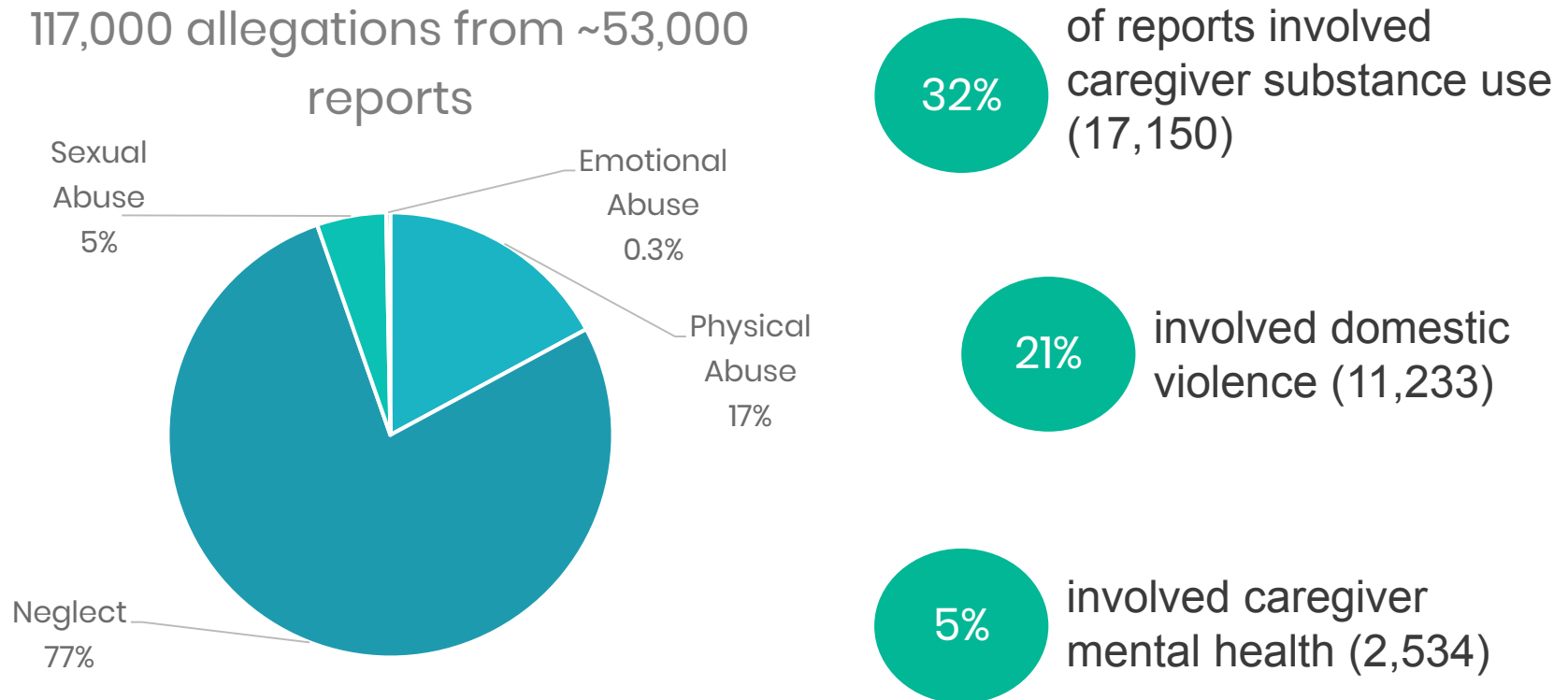
Mental Illness

Parental Incarceration

Parental  
Separation/Divorce

# ACEs in New Jersey

Between July 2019 and June 2020 – **52,824** reports of child abuse and neglect:



# The Landmark ACEs Study (1998)

Research Article

---

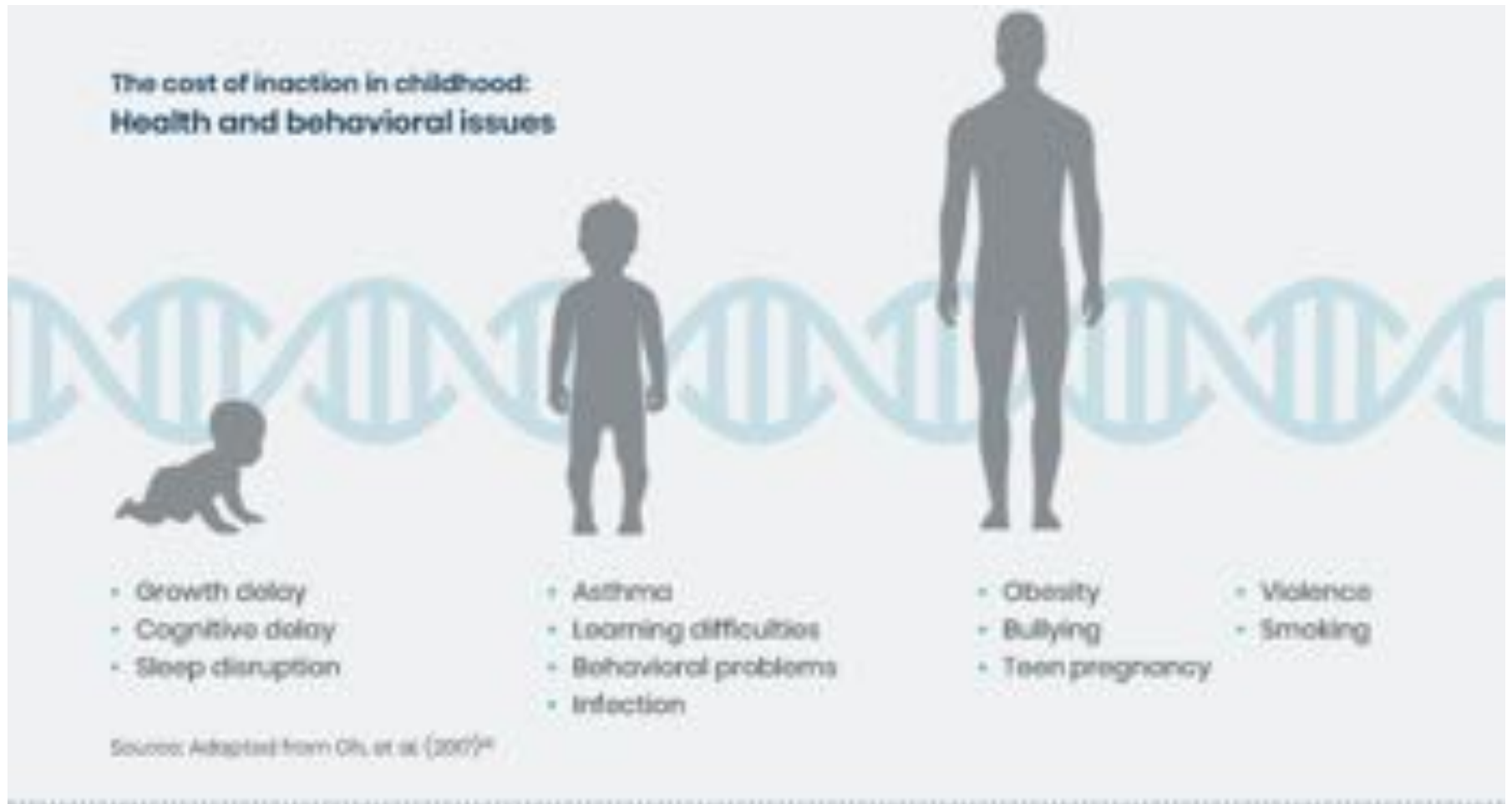
## **Relationship of Childhood Abuse and Household Dysfunction to Many of the Leading Causes of Death in Adults**

### **The Adverse Childhood Experiences (ACE) Study**

Vincent J. Felitti, MD, FACP, Robert F. Anda, MD, MS, Dale Nordenberg, MD, David F. Williamson, MS, PhD, Alison M. Spitz, MS, MPH, Valerie Edwards, BA, Mary P. Koss, PhD, James S. Marks, MD, MPH

---

# The Lifelong Impact of ACEs





# Impact on Different Systems



## Physical & Behavioral Health

Children who experience 4 or more ACEs are **7 times** more likely to suffer from alcoholism as adults and **12 times** as likely to attempt suicide.<sup>18</sup>



## Education

Children who experience 2 or more ACEs are nearly **3 times** more likely to repeat a grade.<sup>19</sup>



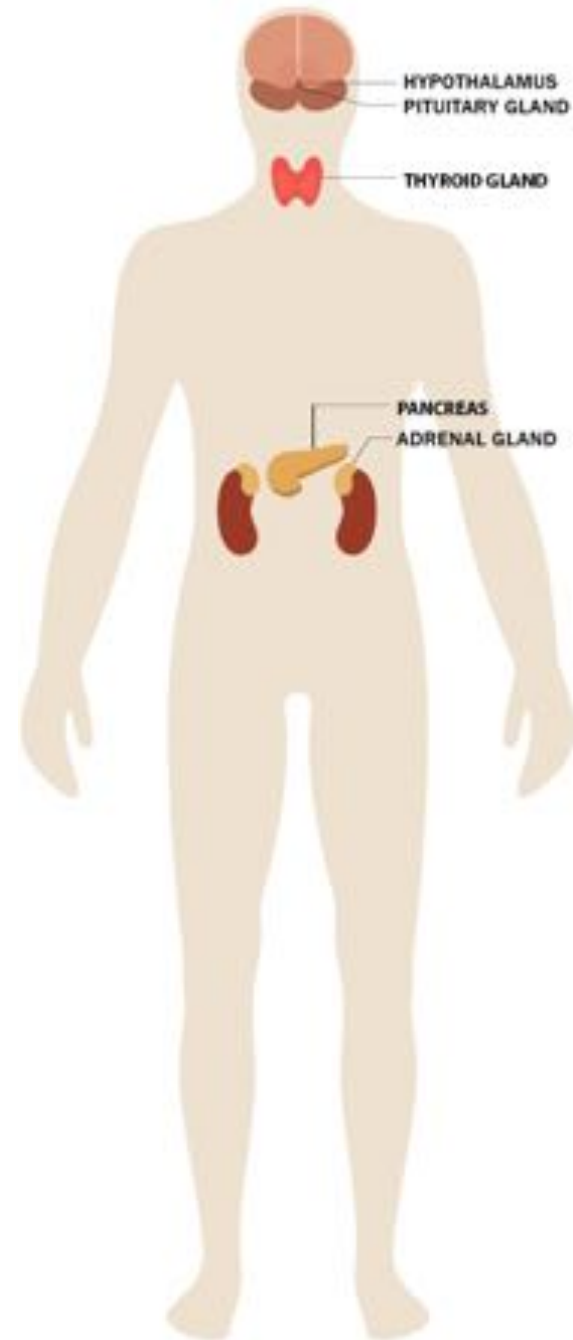
## Criminal Justice

Juvenile offenders are **4 times** more likely to have experienced 4 or more ACEs.<sup>20</sup>

# Trauma

## Impact on Body and Brain

- Over-activation of the Hypothalamic Pituitary and Adrenal (HPA) hormone axis
- Increase in cortisol (stress hormone) levels
- Long term inflammatory and immunological changes



# Dave Ellis

Executive Director for the Office of Resilience



- National leader on the lasting impacts of ACEs and generational trauma
- Coordinates statewide efforts to prevent, protect against, and heal from the effects of Adverse Childhood Experiences
- Facilitated community dialogues and public-private partnerships to promote wellbeing across Minneapolis
- Lead trainer and facilitator on ACEs with the New Jersey Education Association

## The Pair of ACEs

### Adverse Childhood Experiences

Maternal  
Depression

Physical &  
Emotional Neglect

Emotional &  
Sexual Abuse

Divorce

Substance  
Abuse

Mental Illness

Domestic Violence

Incarceration

Homelessness

### Adverse Community Environments

Poverty

Discrimination

Violence

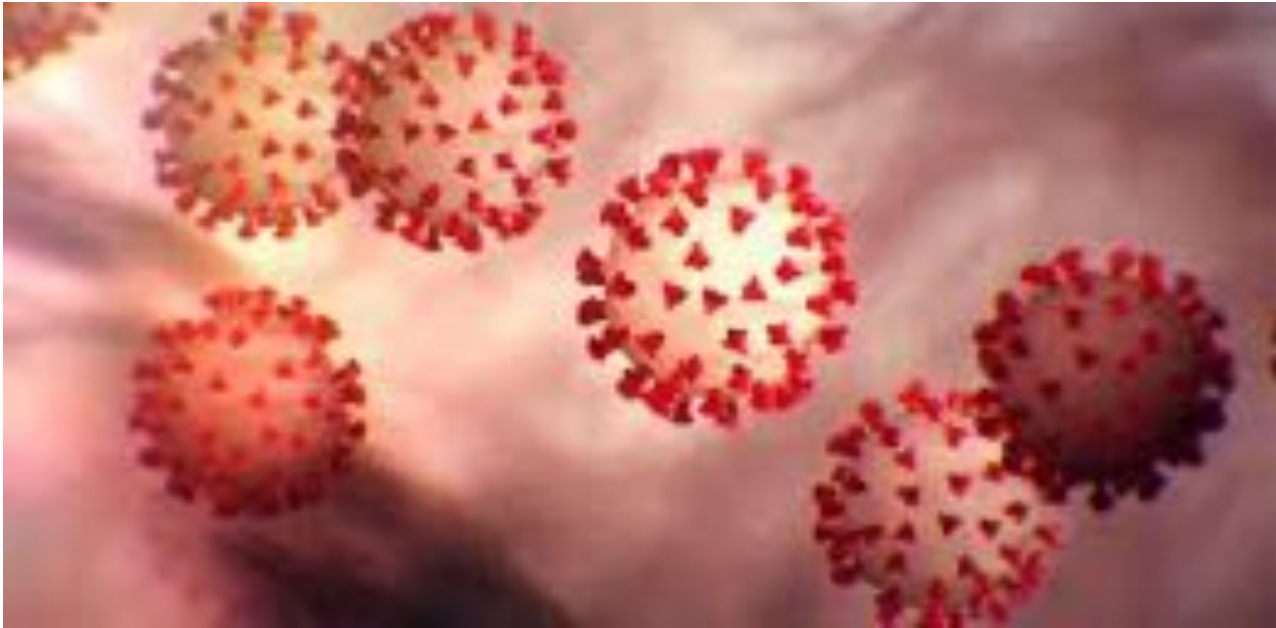
Community  
Disruption

Lack of Opportunity, Economic  
Mobility & Social Capital

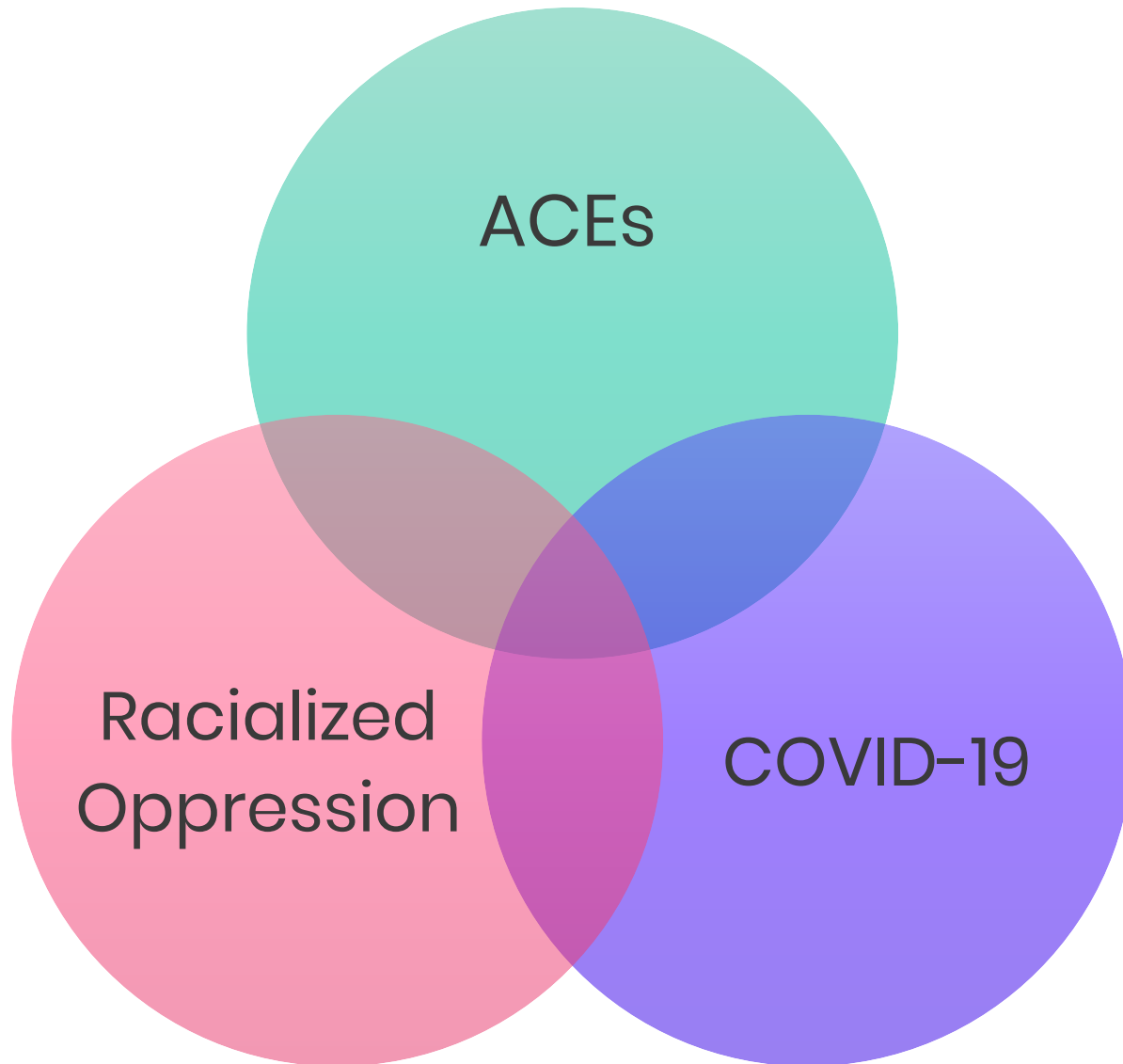
Poor Housing  
Quality &  
Affordability

Ellis W. & Dietz W. BCR Framework. *Academic Pediatrics* (2017).

# The Trauma of COVID-19



# The Three Pandemics



# Vision for the Statewide Action Plan





# UNDERSTANDING

Adverse Childhood Experiences

---

Building Self-Healing Communities





# Addressing ACEs in New Jersey



## Momentum Building

November 13, 2018  
Event

Assembled 100+ public  
and private sector  
leaders.



## ACEs Report

Understanding  
the Field



## 5 Areas of Opportunity



## Hiring Dave Ellis and Statewide Action Plan

- Form interagency task force to carry out recommendations of the Statewide Action Plan
- Convene and activate networks
- Support communities
- Coordinate approaches
- Catalyze new initiatives

# Opportunities for Partnership



## Increasing Protective Factors to Mitigate and Heal from the Effects of ACEs



Expanding ACEs awareness and healing-centered training and support for educators and law enforcement across New Jersey

- Opportunity to partner with Dodge and Burke



Building deeper networks and community resources

- Training community leaders across NJ



Monitoring and evaluation

- Using cellphones to allow for real time data collection and surveys

For More Information and/or  
Questions, Please Contact:

Atiya Weiss  
[atiya@burkefoundation.org](mailto:atiya@burkefoundation.org)

Dave Ellis  
[Dave.Ellis@dcf.nj.gov](mailto:Dave.Ellis@dcf.nj.gov)

# The New Jersey ACEs Collaborative Commitment



Identify, connect, and amplify the best *current work* across all sectors (Statewide Action Plan)

Prioritize new work to address critical unmet or underserved needs (ex. Awareness and Mobilization)

*Your help is critical on both fronts!*